

BUSINESS + LIFE KENILWORTH

KENILWORTH CHAMBER OF COMMERCE



Issue #64

April 2013

The Kenilworth Chamber of Commerce is an affiliate of the Gateway Regional Chamber of Commerce.

**NEXT
KENILWORTH
CHAMBER
MEETING
APRIL 10
8:30 AM
ACCESS
SELF STORAGE
750 BOULEVARD
KENILWORTH, NJ**

**kenilworth
businesslife.com**
The website features
up to date articles,
a calendar of events,
archives of KBL.

PRSR STD-A
US POSTAGE
PAID
Permit #1081
Newark, NJ

SECOND ANNUAL EASTER EGG FOOD DRIVE

Kenilworth Mayor Kathi Fiamingo sponsored the second annual Mayor's Easter Food Drive on March 23, 2013. "This year, we asked those who came to the Easter Egg hunt to bring food to share with those who are less fortunate. Many people responded generously", said Mayor Kathi Fiamingo. Once again, Kenilworth VFW Post 2230 and the Silver Card Association generously participated by donating hams and turkeys which were included in the baskets assembled for local families.

"Our membership unanimously agreed to help refill the food pantry and to make sure that every family that was in need had a turkey and a ham for Easter dinner", said Commander Robert Jeans. "It was our pleasure to help", added Robert Schielke, Silver Card Member, "our membership is behind this effort one hundred percent." Mayor Fiamingo noted that this is the second year in a row that both organizations have provided their help, "I had just about mentioned that we were doing the Easter food drive again this year when they asked 'how can we help?'. I can't thank them enough."



(above) Mayor Kathi Fiamingo and members of the Kenilworth VFW Post 2230 and Silver Card Association deliver turkeys and hams to the Social Concerns Committee at St. Theresa's.

All of the donations were given to the St. Theresa's Social Concerns Committee which operates a food pantry and filled Easter baskets for local needy families.

"WALK 4 WILL" TO BENEFIT LOCAL 4 YEAR OLD

The communities of Cranford and Kenilworth are uniting together to support Will DeGregorio, a local four year old boy fighting cancer. Walk 4 Will is a community-wide event to help raise money to assist with the huge financial burden of his rare adrenal cancer treatments.

*This fun-filled day will take place on
Saturday, May 18th from 9:00am-12:00pm
at David Brearley Athletic Field,
401 Monroe Avenue in Kenilworth.*

Participants will illustrate their commitment to giving back locally; while also supporting a family facing a devastating illness. It is also a great way for families to exercise together while enjoying music and activities for the children. Each participant will commit to a certain number of laps for Will and receive a commemorative t-shirt. A collective goal of 1,000 laps walked is being set for the event.

"I am certain our caring community of Kenilworth will join in supporting the efforts to assist this young family. I am

proud to be able to lend my support as well and look forward to working together with our friends in Cranford to make this event a success," said Kenilworth Mayor Kathi Fiamingo.

Cranford Mayor Tom Hannen added, "I join Mayor Fiamingo in advocating for as many citizens as possible to support this event. In times like these I urge you to join us as a community and help this special little boy Will and his family."

"I am honored and excited to have Will's school Calvary Nursery School & Child Care host an event for him to help support his recovery in a town that I know well. Kenilworth is a place where I grew up and have many family, friends, and fond memories," commented Will's Mother, Kara Shields.

Participant registrations are available at
www.practicehard.com.

Corporate Sponsorship information can be
obtained by email at susanham49@msn.com
or by phone at 908-377-8877.

Follow us on Facebook via WALK 4 WILL!
For more information contact: 908-272-3962.

POSTAL CUSTOMER



THIS SPACE IS NOW AVAILABLE FOR ADVERTISING!!!

Demand for advertising in this space has been high. It is now available on a first come first served basis. Call Tina today to reserve the space in this or other Renna Media publications.

**Each month this newspaper is mailed
to every home and business in Kenilworth**

*Reserve space in the next issue. Call Tina today at 908-418-5586
or email info@rennamedia.com*

BUSINESS + LIFE KENILWORTH

Kenilworth Business Life is published by Renna Media in cooperation with the Kenilworth Chamber of Commerce, which is an affiliate of the Gateway Regional Chamber of Commerce.

Over three thousand newspapers are printed monthly and distributed free to every postal patron in Kenilworth.

Although great care has been taken to ensure the information contained within is accurate, Gateway Regional Chamber of Commerce assumes no liability for errors or omissions.

Gateway Regional Chamber of Commerce welcomes the comments and concerns of its readers put into writing and sent to:



P.O. Box 300 • Elizabeth, NJ 07207-0300
908-352-0900 • 908-352-0865 Fax
Email us at info@gatewaychamber.com

Vice President: Kate Conroy
kateconroy@gatewaychamber.com

Kenilworth Chamber of Commerce Chairwoman
Isabel Coronel: 908-259-1020
Kenilworth@access-store.com

KENILWORTH, NJ

www.kenilworthnj.com

MAYOR:

Kathi Fiamingo

COUNCIL MEMBERS:

Peter Corvelli	Tony DeLuca
Toni Giordano	Brian Joho
Scott Klinder	Fred Pugliese

BOROUGH PHONE NUMBERS

Emergency	911
Police Department	276-1700
Fire Prevention	276-8935
Borough Clerk	276-9090
Tax Office	276-5800
Board of Health	276-2740
Building Inspector	276-5802
Public Works	276-5073
Library	276-2451
Senior Center	272-7743
Kenilworth Board of Education	276-5936

www.kenilworthschools.org

© 2013 Contents of this newsletter cannot be reproduced without written consent from the Gateway Regional Chamber of Commerce.

ADVERTISING & PRESS RELEASES

Inquiries concerning advertising and submissions of press releases can be made to Renna Media LLC via phone, fax or email to:

TINA RENNA

Email: TinaRenna@RennaMedia.com

Phone: 908-418-5586 • Fax: 908-709-9209

THANKS TO ALL WHO HELP THOSE IN NEED



On March 23rd the second annual Mayor's Easter food drive was held in conjunction with the Easter Egg Hunt. I am happy to say that the food drive was a great success, thanks to all of the generous folks who helped. Once again the Silver Card Association and the Kenilworth VFW generously assisted in the project by donating hams and turkeys.

It is so gratifying to see everyone pitching in to help those in need.

On April 13, 2013 spring will really start with the opening of the Little League season. The parade will start from St. Theresa's parking lot at 12:30 and march along the Boulevard to the field on North 14th Street. The annual opening ceremony will be held at 1:00 p.m. at the field.

On Saturday, April 20, 2013, the Recreation Committee will hold its own parade for all those participating in Spring sports. There is still time to sign up. Anyone interested in a spring sport should contact the Recreation Department.

Shortly, the Beautification Committee will be filling the flower pots again along the Boulevard. The committee has done a great job to date and I know they are looking forward to getting their hands dirty again this year. Anyone wishing to join the committee should contact Borough Hall at 908-276-9090 and leave your name and number.

We will again be looking for donations to help defray the cost to fill the pots with flowers. If you would like to donate, please send me an email at k.fiamingo@kenilworthnj.org.

There will be a lot of sweet things happening at the Recreation Center on April 27th. The Recreation Department will host the second cupcake contest. There are several different age groups that will be competing. Take it from me, last year the competition was fierce and extremely sweet! I look forward to judging again – who doesn't want to judge a cupcake contest???

Finally, the Relay for Life will again be held at David Brearley Middle/High School field on June 1 to June 2. The monies raised are used to fund research by the American Cancer Society. The events of the evening are fun, rewarding and touching, all at once.

For more information on how you can participate in Relay and raise funds for this worthy cause, please visit www.relayforlife.org/kenilworth. Even if you do not join a team or do any fundraising for the event, you should plan on stopping by and seeing what Relay is all about.

Mayor Kathi Fiamingo

25 years in business.



- Steps • Walkways
- Chimneys • Fireplaces
- Water Proofing
- Foundations • Patios
- Custom Stone Work

- Free Estimates -
- Fully Insured -
- All Work Guaranteed -

Roselle Park Summer Camp

"A Great Camp Makes a Great Summer"

June 24 – August 16, 2013 – 8 am to 6 pm

7:30 AM Drop off available!

K-8 Camp and Pre-school Camp

Fun and educational activities for all, in a pleasant learning environment!!

Programs & Clinics for 2013

Softball, Tennis, Baseball, Basketball, Soccer

Register for any 2 clinics & get the 3rd free!!

Also offered

5-week Reading & Writing / Math Program

from July 9th – August 8th – 3 days a week

Swim Lessons Available

from June 24th – August 9th

Open House May 9

6 pm to 8 pm at Roselle Park High School

Check our website: www.rpsd.org

To enroll Call:

(908) 241-2851

Email:

summercamp@rpsd.org

- Great Facilities

- Excellent Staff

- Affordable Prices

• Choice of 3 to 5 Days Per Week

• Full or Half Day Schedules Available

• Convenient Weekly Registration

TWO EVENTS PLANNED AT ATLANTIC FEDERAL

Atlantic Federal Credit Union will hold two community events on Saturday, April 20th at their headquarters at 37 Market Street, across from the A&P.

From 9 am to 1 pm, there will be a Special One-Day Vehicle "Test Drive" Event with dozens of select late-model used vehicles from Enterprise Car Sales on display in the parking lot. Staff from Atlantic Federal will be on hand to process loans.

From 10 am to 11:30 am, there will be a workshop on "Preparing for Homeownership" in the 2nd floor meeting room. The community is invited to come learn the financial steps you should take before your home purchase. Atlantic Federal mortgage specialists will explain the types of mortgage loans that are available and the players involved in the home buying process. Plus, get some tips on how to budget and improve your credit score. Light refreshments will be served. Seating is limited. Call us at 908-245-1750, ext. 7512 or e-mail carlag@atlfedcu.com to reserve a seat.

Anyone who lives, works, worships, attends school or regularly does business in Union or Essex County is eligible to open an account at Atlantic Federal. As a not-for-profit credit union, Atlantic Federal offers lower rates on loans, higher rates on savings and fewer fees. The Credit Union belongs to a nationwide network of more than 28,000 surcharge-free ATMs that provide members easy access to funds. For more information, go to www.atlfedcu.com

CIVIC EDUCATION IS ALIVE AND WELL IN THE KENILWORTH SCHOOL DISTRICT

Dr. Scott Taylor, Assistant Superintendent, Kenilworth Public Schools

One of the most important things Harding Elementary and Brearley Middle-High Schools can do for the children and young adults of Kenilworth is to nurture them to be productive citizens of our community. To this end, both schools have produced very comprehensive and engaging civic education programs that center around student governments.

Student government has been a part of almost everyone's primary-secondary educational career. We can recall the campaign posters that adorned school hallways, the assembly speeches made by the candidates, and student lobbying to change policy that ranged from the use of vending machines during school hours to the change of a mascot. While all of these activities are alive and well in our schools today, student government has taken on an even more important role: that of community service.

The Student Council of Harding School, comprised of class representatives and various school officers, has raised thousands of dollars for many worthy causes. In 2011-2012, the group generated \$3,800 in funds for the Leukemia and Lymphoma Society. In that same year, students gave \$900 to the American Cancer Society. Under the tutelage of Ms. Laura Walsh and Ms. Gina Serpico, Student Council members have provided anti-bullying assemblies for Grades Pre-K to Six and have

facilitated contests such as the design competition for annual spirit wear sales that have raised money to support the Reading is Fundamental (RIF) campaign dedicated to providing free books to all of the elementary public school students in town.

The Brearley Middle-High School's student government, advised by teachers Ms. Bechtler and Mr. Rosetti, has also been a very active contributor to the Kenilworth community's causes. A large-scale effort to beautify Kenilworth's Boulevard had our young adults cleaning the street's flower beds, planting flowers, and making sure the town's "gateway" welcomed visitors with color and vibrancy. The group has also reached out to one particular family whose little one is struggling with cancer and "adopted" the 12-year old child. Finally, various bake sales have raised money specifically targeted for a local battered woman's shelter. This effort has been ongoing since 2003.

Community service is recognized by the federal government as a necessary component of a world class educational program. The Kenilworth School District has looked to its own community to provide support while teaching students the importance of giving and acting as productive and responsible citizens.

Now Serving Everyone In Union & Essex Counties



Banking you can trust at your not-for-profit Atlantic Federal Credit Union. Now everyone who lives, works, worships or attends school in Union and Essex counties can join along with their entire family.

- New & Used Vehicle Loans ■ Real Estate Loans ■ Federally Insured Savings, CDs & IRAs
- Free Checking with No Minimums, No Monthly Fees, No Per-Check Charges ■ Free On-Line Banking & Bill Payer ■ 28,000 ATMs Nationwide with No Surcharges, including 5,000 in 7-Elevens

1-908-245-1750
www.atlfedcu.com

Kenilworth
37 Market St.
Kenilworth, NJ
(across from A&P)

Elizabeth
210 Williamson St.
(by Trinitas Hospital)

Newark
550 Broad St.
Newark, NJ



NEW STREET BANNERS!

In an effort to beautify the Borough, the Kenilworth Chamber of Commerce has embarked on an initiative to update the current street banners.

The banners will measure 60" long and 30" across with space on each for the sponsor's name, along with a picture and a specific word that applies to the sponsor. In the case of the library, the banner says, "Read You're In Kenilworth"

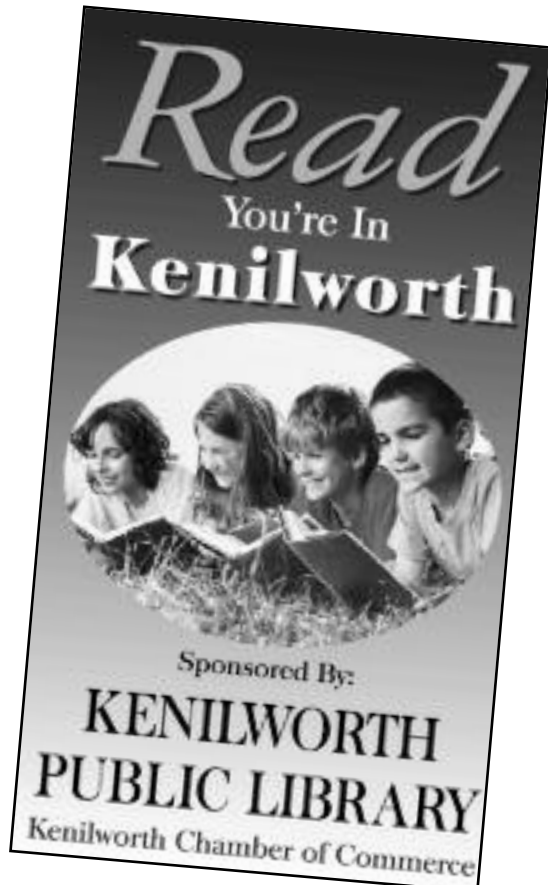
The cost to sponsor a banner is \$300.00 for Chamber Members and \$400.00 for non-members.

*If you prefer having your logo on the banner, we can do that for an additional cost of \$75 per banner!

Businesses may purchase as many banners as they wish. The banners will last a minimum of three years and will be placed on telephone poles along the Boulevard and Michigan Avenue in the Spring of 2013.

The proceeds of the Street Banner Program will benefit graduating Kenilworth high school seniors. Please call 908-352-0900 with any questions or to place your order!

Deadline for ordering banners is April 30th!!!



Charlie "O" DJ Service

"Music the way you want it!"

Specializing in Birthday/Anniversary Parties, Class Reunions, Fundraisers, and Award Dinners

Affordable Rates

Charlie Oliva

908-245-9446

CharlieODJService@yahoo.com

www.charlieodj.webs.com

KENILWORTH CHAMBER OF COMMERCE SENIOR ESSAYIST AWARD

The Chamber would like to recognize a graduating High School Senior who is a resident of Kenilworth for outstanding achievement in expressing himself or herself in the form of an essay.

The essay may have been prepared for College applications or one written specifically for our consideration. The criteria for our judging will be similar to that used by college admissions committees, as expressed on the website Collegeboard.com.

The essay should reveal the best qualities of the student. The essay will be judged subjectively by the Chamber committee to determine which student stands out from the rest based on the essay's concept. The Committee will consider the Student's ability to write well, and support ideas with logical arguments. The Committee will also weigh the character of the student as it is revealed through in the essay.

Selected Senior will receive an iPad

iPad with Retina display, 16 gb with wi-fi and Cellular capability, Logitech Ultrathin Keyboard and Cover included.

(Award subject to availability and may be substituted for comparable item.)



Visit the school guidance office for details and to pick up an application. The deadline for submission is FRIDAY, MAY 3, 2013.

SISTER EMY HOSTS APPRECIATION DINNER

Submitted by: Charlie Oliva

Sister Emy DeFilippi, Principal of St. Theresa's School, hosted a dinner party on March 19th in the school's cafeteria, in appreciation of the assistance she received from our local Police and Fire Departments in upgrading the school's camera security system in the wake of the Newtown Tragedy.

As detailed in last month's Kenilworth Business Life, St. Theresa's now has a total of 12 surveillance cameras, and a security system that is equal to those in place at Harding and Brearley Schools. It also includes new security mirrors on school staircases and window tinting on all outward-facing windows.

Those attending on this most enjoyable evening included Police Chief Kenneth Grady, Sgt. Soos, Patrolman Devlin, members of the Kenilworth PBA, Fire Chief Lou Giordino and members of the Kenilworth Volunteer Fire

Department, who presented Sister Emy with a donation. Ben and Eli Felner of Better Auto Care, who were instrumental in installing the new system, also attended

The Kenilworth Rotary Club, represented by Past President Jay Gilden, Treasurer Mary Orella and Secretary Brian Luciani, also made a financial contribution towards the security upgrade at the school.

The Rotary Club has been an active service organization for over 60 years, helping local schools, the Kenilworth community and national organizations. Dr. Scott Taylor is the current Club President.

The club meets each Wednesday at the Bella Napoli (24 North 20th Street in Kenilworth) from 12:15-1:30pm. New members are always welcome. For more information, go to kenilworthnjrotary.org.

Local. Trustworthy. Insurance.



(855) 467-2877
INSCTRS.com

100 Walnut Ave, Suite 503
Clark, NJ 07066



1-800-TEAM-LAW®

TEAMLAW.COM

TOBIN REITMAN GREENSTEIN CARUSO WIENER KONRAY & KESSLER



- Motor Vehicle Accidents
- Slip & Fall Accidents
- Dog Bites
- Medical Malpractice
- Legal Malpractice
- Wrongful Death
- Birth Injuries
- Nursing Home Neglect
- Unsafe Products
- Employment Cases
- Traffic Violations/DUI
- Workers Compensation
- Social Security
- Immigration
- Construction Site Accidents
- Boating Accidents

Serving the Union County Area Since 1965
TeamLaw.com

Se Habla Español • Fala-Se Portuguese

Main Office: 136 Central Avenue, Clark 732.388.5454

Branch Offices: (By Appointment Only)

Elizabeth • 908.351.3322
Westfield • 908.654.7337
Perth Amboy • 732.738.7774
New Brunswick • 732.246.7755

Summit • 908.598.0300
Edison • 732.902.2007
West New York • 201.861.1494
Plainfield • 908.756.9209

Orange • 973.672.6551
Newark • 973.622.1122
Jersey City • 201.653.0101

KENILWORTH INN HOSTS SPEED NETWORK EVENT



(above, l-r) Kate Conroy, of the Gateway Chamber of Commerce, Joe Golden of The Kenilworth Inn, and Pamela Callendar of Counsellor Title Agency.

The Kenilworth Inn hosted the Gateway Regional Chamber of Commerce speed networking event called Gateway Today! on April 3, 2013.

Gateway Today! has become one of the most effective networking events that the Gateway runs. Sixty businesses met for the 7:30 am breakfast and got two minutes to pitch their services to a table of ten before moving onto another table. They do this three times and then stay to network with the balance of attendees.

Find out more about the Chamber by calling Kate Conroy at 908-352-0900 or visit their website at www.gatewaychamber.com



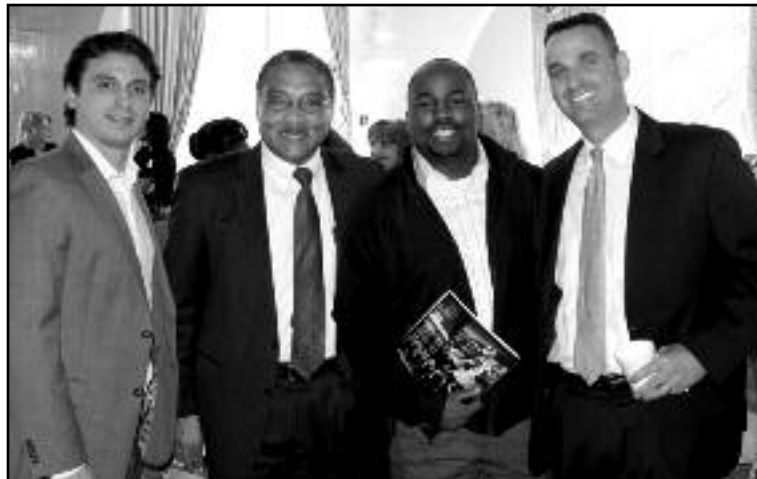
(above, l-r) June Lazaro of Primerica, Maria LaMorte-Wright of CMIT Solutions, and Helen Sorrentino of HR Practices.



(above, l-r) DJ Charlie Oliva, Italian Singer Jim Alleva, and Jack Byrne of Jax Electrical Services.



(above, l-r) Rich Larcara of New York Red Bulls, Jack Frost of Firm Foundations, Joanne Kula of Union County College.



(above, l-r) Mike Schwartz of Image Systems, A. Gordon Blake of W.B. Mason Co., Ronald Laborde of Cash Flow, and Any Powell of Broadview Networks.



Fusion's FUN-TASTIC Summer!
With six weeks of camps and classes, there's something for everyone!



Theme Camps for ages 3-5!

- *Pretty Princesses
- *Under the Sea
- *Disney Junior
- *Fun and Games
- *Dance and Play

Evening Classes for ages 2 and Up



Don't miss the fun - REGISTER NOW!!!

Fusion Dance Centre
753 Boulevard, Kenilworth
908-620-1000

www.fusiondancecentre.com

Dance Intensive begins June 18th
Camps and classes run July 8th-August 16th

Theme Camps for ages 6-10!

- *Shake It Up
- *Break Dance Boot Camp
- *GLEE Musical Theater Camp
- *Divas Rule
- *Hip Hop 'til You Drop
- *Think You Can Dance?

Dance Intensive for ages 13 & up



BULLY PROOF

SEMINAR APRIL 13TH 1:00PM - 3:00PM

100 PERCENT OF THE PROCEEDS GO TO



“PINNING DOWN AUTISM”

DONATIONS ENCOURAGED & APPRECIATED

**“AMERICAN SCHOOLS HARBOR
APPROXIMATELY 2.1 MILLION BULLIES”**

“1 IN 7 CHILDREN ARE BULLIED”

**“56 PERCENT OF STUDENTS
HAVE WITNESSED SOME TYPE
OF BULLYING AT SCHOOL”**



★ ★ ★ ★
**ALLSTAR BRAZILIAN
JIU-JITSU / MMA
TRAINING FACILITY**

**400 SWENSON DR
KENILWORTH NJ 07034
(908) 671-1585
WWW.ALLSTARBJJ.COM**



BREARLEY STUDENTS ASSEMBLE AND DONATE HOLIDAY GIFT BASKETS

Submitted by: Mr. David Novak

Students at the David Brearley Middle and High School collected donations of chocolate bunnies, bubble kits, toys, and other holiday treats to fill baskets for fifteen children currently in foster care. The baskets were then assembled by the school's community service club. The student members of the David Brearley High School Bears That Care club, faculty advisor Ms. Christa Candon, members of the David Brearley Middle School Bruins That Care club,

and faculty advisor Mrs. Diane Westbrook assembled the baskets after school the week before Easter. The baskets were then donated to a local charity to distribute to the foster care children.

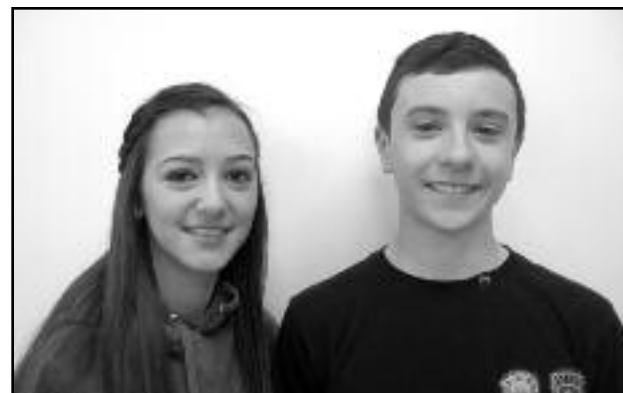
This is another great example of David Brearley students giving back to the community. The Bruins and Bears That Care clubs perform community service projects and activities throughout the school year.



(above, l-r) Montana Cushmeyer, Heather Braun, Brielle Bamber, Sydney David, Christopher Zobek, Jonathan Zobek, and Ms. Christa Candon.

MIDDLE/HIGH SCHOOL STUDENTS OF THE MONTH

Submitted by: Mr. David Novak



(above, l-r) Raquel DaCosta and Christian Burns

The David Brearley High School Student of the Month for April 2013 is senior Raquel DaCosta. Raquel is an active and conscientious student who contributes in a variety of ways to the David Brearley and Kenilworth communities. She is a frequent member of the David Brearley High School Honor Roll, as well as a long-time member of the David Brearley Bears That Care community service organization. Her community service also includes helping to organize the school blood drives which are held twice a year at the high school. A varsity soccer player, Raquel has channeled her expertise into coaching in the Kenilworth Recreation Soccer Program. Congratulations, Raquel!

The David Brearley Middle School Student of the Month is Christian Burns. Christian is described to be an all around student. He is an enthusiastic learner showing his academic abilities through the distinguished Academy Program. His teachers feel Christian is a bright star in their classroom. He helps others students when they have questions, he participates in all discussions and is super conscientious in handing in a completed product. Christian also is involved in sports. He is on the wrestling team and plays football. This is not surprising that he excels in sports as he is a true team player. Congratulations Christian, for a job well done!

State Farm

John Klein, Agent

www.insurewithklein.com
john@insurewithklein.com
Fax 908-967-6428

For a quote call 908-967-6424
505 Boulevard, Kenilworth, NJ 07033-1603

Kathleen Gwaldis
27 Years of Experience
cell: (908) 400-8409
www.kathleengwaldis.com

Kenilworth Real Estate Specialist
FREE MARKET ANALYSIS

Weichert Realtors
Realtor Associate - Weichert President's Club
185 Elm Street, Westfield NJ, 07090
Office: (908) 654-6560, x 162

Get Better Here

Our doctors know all 206 bones in your body—tendons and ligaments, too. Our specialty: hand, arm, shoulder, foot, ankle, knee, hip, back and any pain in the neck. Rebuild your life. Get leading edge care close to home.

UNION COUNTY ORTHOPAEDIC GROUP

210 W. St. Georges Avenue
Linden, NJ 07036
(908) 486-1111

1139 Raritan Road
Clark, NJ 07066
(732) 388-1761

John Kline MD
Walter Pedowitz MD
Richard Mackessy MD
David Rojer MD
Morton Farber MD
Christopher R. Roplak MD
Nathaniel Sustain MD
Naomi Betesh DO

EYES ON YOU 1535 Irving Street, Rahway, NJ
732-388-3900
www.primaryecp.com/eyesonyou

FAMILY EYECARE AND OPTICAL

Comprehensive Eye Examinations
Glaucoma Testing and Cataract Evaluations
Treatment and Management of Ocular Disease
Variety of Eyewear including Designer Brands
Contact Lens Examinations
Variety of Contact lenses
Eyeglass Repairs

Dr. M. Williams
Optometric Physician
Lic#. 27OA00565300/27OM00062400

Our Office Hours:
Mon: 10am to 6pm
Tues: 10am to 6pm
Wed: Closed
Thur: 10am to 6pm
Fri: 10am to 6pm
Sat: 9am to 2pm
Sun: Closed
Late appointments are available by request.

INSURANCES: Please call if you do not see your insurance plan listed.

- Eyemed
- VSP
- Aetna
- Avesis
- Qualcare
- Davis Vision
- Medicare
- Medicaid
- NVA
- Block Vision
- Superior Vision
- Oxford
- Optum Health Vision (formerly Spectera).
- United Health Care
- Blue Cross Blue Shield of NJ
- Vision Benefits of America
- Empire Blue Cross Blue Shield and many more.

.E. EYES ON YOU

DAVID BREARLEY ANNOUNCES 2013 TEACHERS OF THE YEAR

Submitted by: Mr. David Novak

The Governor's Teacher Recognition Program was developed in 1985 for the purpose of acknowledging teachers who exhibit outstanding performance. The premise of recognizing teachers is based on the following: (1) the successes of our public schools are due to the quality and dedication of their teaching staff; (2) the recognition of excellence will encourage teachers to strive for excellence; (3) by giving the teaching profession the stature and recognition it deserves, more capable people will be attracted to the profession; and, (4) like other professionals, outstanding performance should be acknowledged.

Mrs. Cynthia Yakovchuk has been selected as the David Brearley Middle School Teacher of the Year for 2013. Ms. Yakovchuk has been a language arts teacher at Brearley for nine years. For eight of those years, she has been responsible for working with students in our Johns Hopkins program and preparing them to take the SATs as eighth graders. Mrs. Yakovchuk is also an integral part of the success of our Academy program. She is a trailblazer in the classroom, always looking for opportunities to take on responsibilities and leadership roles. This year she accepted the challenge of teaching a combined 7th and 8th grade course. Her dedication and commitment to academic excellence is evident in everything that she touches.

In addition to all of her efforts in the classroom, Mrs. Yakovchuk makes other contributions to the Brearley community. She is the coordinator of the STAR Awards and the co-advisor to both the middle school newspaper and the middle school yearbook. Mrs. Yakovchuk works closely with her colleagues to create rich literacy experiences for the entire middle school. She spends hours planning our Teen Read Week celebration and hosting the culminating assembly with unrivaled prowess. Mrs. Yakovchuk is the kind of educator whose commitment extends beyond the bounds of the

school day. She contributed to our "I Believe" mosaic by facilitating writing workshops after school with parents and senior citizens. She volunteered to host the middle school talent show and was a reader at our first African American Read-In.

Mrs. Yakochuk has been able to strike the perfect balance of establishing a creative, energetic classroom with high academic expectations and standards. Her students appreciate how she takes the time to make each lesson connect to them and their everyday lives. One of her students noted that she "brings life to learning." Another student commented, "She's that good."

The Middle School Staff is proud she is being recognized for all of her hard work and feels lucky to have her.

Ms. Danielle Wilkinson has been chosen as the David Brearley High School Teacher of the Year for 2013. For the past nine years Ms. Wilkinson has been an art teacher here, but her connection with the school goes back much further. She was a Brearley High School student herself, excelling in art, and graduating in 1999. After earning her bachelor's degree in art with a photography concentration from Ramapo College, Ms. Wilkinson returned to Brearley as a teacher in 2004. Since that time, she has done a great deal to facilitate the growth of the school's art department. She began her career teaching two of the only three courses that were then offered. Soon she instituted a graphics art course, a photography class, and finally advanced photography. This winter, over one hundred thirty students have requested photography as an elective for the coming school year.

The reason for the popularity of Ms. Wilkinson's courses is that she is known to be a dedicated teacher who always adds a practical side to her instruction. Her graphic design students have just completed a project to design a logo for the Community Actors' Student



*(above, l-r) Danielle Wilkinson
and Cynthia Yakovchuk*

Theatre of Kenilworth. The board members of the organization are thrilled with the results, stating that they are amazed at the professional quality of Ms. Wilkinson's students' work. These same students were also recently praised for their design of, and sales campaign for a tee shirt promoting the Restore the Shore movement to raise money for victims of Hurricane Sandy. The students love the fact that Ms. Wilkinson takes her teaching beyond the classroom into the real world making it more relevant for them.

Ms. Wilkinson is most passionate about her true area of artistic expertise, photography. She is constantly changing her photography curriculum, coming up with projects based on cutting edge techniques and subject matter. She takes her students on trips that inspire them and broaden their collective point of view. Her photography classes have gone on photo documentation excursions into Manhattan, Philadelphia, and locally, to Nomahegan Park. Her work with her students gets to the heart of important issues as well. Last month, she led a group to Long Beach Island to document its condemned buildings days before they were destroyed.

Ms. Wilkinson approaches her work with the Brearley staff, with the same dedication that she applies to her work with her students. She is the coordinator of the Brearley PSLP (Personalized Student Learning Plan) Program. In this role she organizes assemblies, communicates with the PSLP teachers, as well as the guidance department to make sure that all runs smoothly. From the start of her involvement, Ms. Wilkinson has worked hard with both faculty and administration to develop this program into a worthwhile experience for everyone.

Ms. Wilkinson is a hard worker who has earned the respect and affection of her students and her peers. The high school art department is particularly proud to be represented by her, and the entire high school is richer for the constant pursuit of quality and relevance that she exhibits through her teaching.

WE CAN HELP YOU GET ORGANIZED



908-259-1020

750 Boulevard
Kenilworth, NJ 07033

www.accessselfstorage.com

**50% OFF
FIRST MONTH**

New customers only. Expires 5/6/13.



IT'S BEEN A WONDERFUL SIXTEEN YEARS

For those of you who may not already know, I will be leaving the Kenilworth Public Library after more than sixteen years as its library director to assume the director's position at the Springfield Public Library. Because of my deep attachment to my coworkers, board members and library patrons, the excitement I feel about the prospect of stepping up to run a larger library is tinged with the sadness I feel when I think about the prospect of leaving all the friends I have made during my time here.

During these past sixteen years, it is my hope that the library has contributed in one way or another to making life better for everyone in the Kenilworth community; I have every confidence that the good work that gets done here is going to continue under new leadership. I also want everyone to know how much working in this wonderful town has enriched my own life. I am going to miss you all.

Dale Spindel, Library Director

BROADWAY MUSICAL FAVORITES ON MAY 3

The Kenilworth Public Library is excited to present the internationally acclaimed concert violinist David Podles at 7:15 PM on Friday evening, May 3, for a program of Broadway musical favorites. Originally from Riga Latvia and having performed at such venues as Lincoln Center, Carnegie Hall, The Bolshoi and Kirov, Podles is a laureate of 3 international competitions and has more than forty years of experience performing on stage in Russia, Europe and the United States.

This program is free and open to all members of the general public but because space is limited, priority in registration will be given to Kenilworth residents. Registration will open to residents of other communities on May 1.

KENILWORTH FREE PUBLIC LIBRARY

Located at 548 Boulevard. Library website is www.kenilworthlibrary.org.

Registration for programs may be done in person at the library or by calling 908 276-2451.

The library's regular schedule of operation: Mon, Tues and Thurs: 10:00 AM to 9:00 PM,

Wed: 10:00 AM to 6:00 PM, Fri: 10:00 AM to 5:00 PM, Sat: 10:00 AM to 2:00 PM.

The Kenilworth Public Library is handicapped accessible.

[facebook.com/kenilworthworth.public.library](https://www.facebook.com/kenilworthworth.public.library)

INHERIT THE WIND TO BE PERFORMED AT BOROUGH HALL

The Kenilworth Public Library is pleased to invite members of the public to a performance of the classic American drama *Inherit the Wind*, by Jerome Lawrence and Robert E. Lee, to be performed by members of The Hudson Shakespeare Company in the municipal courtroom of Kenilworth Borough Hall on Friday, April 12, at 7:30 PM (doors opening 7:10 PM). Admission to this performance is free and open to all members of the general public but because space is limited, preregistration is required and first preference will be given to Kenilworth residents. If space permits, registration will open to residents of other communities on Wednesday, April 10. Registration can be done in person at the library, located at 548 Boulevard, or by calling 908 276-2451 during regular library hours.

First published in 1955, *Inherit the Wind* dramatizes the furor that arose thirty years earlier when John Scopes, a teacher in the small town of Dayton, Tennessee, was charged for teaching students evolution and not the creation story as told in Genesis. The case received national attention as the fiery, three time unsuccessful presidential candidate, William Jennings Bryant, took up the cause of evolution in the courtroom, facing off against the equally passionate but low key Clarence Darrow.

Inherit the Wind became permanently ensconced in American popular culture when it was later made into a movie starring Spencer Tracy and Frederick March taking on the fictionalized roles of Henry Drummond (Darrow) and Matthew Harrison Brady (Bryant). While the play is based on real events of almost a century ago, the setup of the play takes on an almost timeless, anywhere

quality, according to director Jon Ciccarelli. The centerpiece debate of the play, Creationism vs. Evolution, is still with us but the play is concerned with deeper themes and asks the profound question, "who are you?," continues Ciccarelli. Beyond the question of personal identity, the play also depicts families and friends being divided along the lines of this passionately felt and argued issue.

The presentation of *Inherit the Wind* marks the first time that The Hudson Shakespeare Company will be returning to the Kenilworth municipal courtroom since its 2006 performance of *A Few Good Men*. More information about The Hudson Shakespeare Company can be found at www.hudsonshakespeare.org.

WOOD CARVINGS OF THE LATE ARTHUR MORISON ON DISPLAY

The Kenilworth Public Library is pleased to host a display of woodcarvings by the late Arthur Morison, a recently deceased long time resident of Kenilworth. Of the thirty-six items on display in the showcase, all but one has been carved by Morison from a single piece of wood. Mostly self-taught, Morison began carving in 1981 and received support and assistance from the members of two wood carving groups that he joined, the North Jersey Wood Carvers and an unnamed group of woodcarving enthusiasts that met in Linden. Two of the pieces on display, a rabbit with three eggs and an American eagle emerging from a wooden background, were each awarded blue ribbon status by Morison's woodcarving colleagues.

The woodcarvings will be on display through the end of May.

grOW
your banking relationship with us.

One great rate,
you choose
the term!

20-MONTH CD | 24-MONTH CD | 30-MONTH CD | 36-MONTH CD

1.10% APY¹

\$500 MINIMUM BALANCE TO EARN INTEREST

Open one of the below CDs and
get rewarded² when you have
or open any interest-bearing
checking account with us.



Open a My Community Interest
Checking and get a FREE gift -
\$100 dining card.²

For more information stop by your local branch today.

myGSCB.com • (877) 786-6560



Garden State Community Bank

A Division of New York Community Bank • Member FDIC



¹Annual Percentage Yields (APYs) are accurate as of publication date and are subject to change without notice. The minimum balance to open and earn interest for the 20-month, 24-month, 30-month and 36-month CD is \$500. The interest rate remains fixed until maturity. A penalty may be imposed for withdrawals before maturity. Fees could reduce earnings. In order to qualify for the stated APYs on a 20-month, 24-month, 30-month and 36-month CD ("promotional CD"), you must have or open any interest-bearing checking account. If you do not have an existing interest-bearing checking account with us and choose to open a new interest-bearing checking account, it must be opened on the same day that you open the promotional CD and opened with new money not currently on deposit with the Bank. The promotional CD must also be opened with new money not currently on deposit with the Bank. Advantage Banking customers who open one of these promotional CDs and meets the above requirements will receive the stated APYs and will not receive the additional APY increase as part of their Advantage Banking Relationship package. ²Promotional reward contains a \$100 dining credit to be used at www.DiningDough.com (the "bonus"). Dining reward credit may require minimum spend at thousands of participating restaurants. Other restrictions may apply; visit the specified website for complete terms and conditions and participating restaurants. The bonus will be provided at account opening during the promotional period of March 9, 2013 through April 15, 2013. The minimum balance to open the My Community Interest Checking account and obtain the bonus is \$100. Account must be opened with funds not currently on deposit with the Bank. Dining Reward Card has no cash value, is not redeemable for cash and may not be combined with credits from other Reward Cards. One bonus per household. While supplies last. Other terms and conditions may apply - see www.DiningDough.com for full details and restrictions. The bank is not responsible for typographical errors. Offer may be withdrawn at the discretion of the bank at any time.

Free workshops in MS Word, Excel, Outlook and Windows are now offered in Cranford and Elizabeth by Union County College's Industry-Business Institute. These eight (8) hour classes are specifically for employers who want to train their employees in these applications to enhance productivity, improve efficiency and make better use of these standard applications to grow sales, improve service and keep more accurate records.

Visit the Industry-Business Institute's webpage at www.ucc.edu/go/ibi and click on Ongoing Grant Funded Programs for details and registration instructions.

Union County College offers these to the employees of local businesses through a unique partnership of the New Jersey Business and Industry Association (NJBIA), the New Jersey Community College Consortium, and the New Jersey Department of Labor and Workforce Development.

Through the grant-funded NJBIA Project,

employees can be trained at one of Union County College's conveniently located campuses in Elizabeth or Cranford, or on-site at a participating business facility. Training is available in the following areas: Computer Applications (Windows, Outlook, Excel, Word), Mathematics and Measurement, Communications (verbal, written and customer relations), and English as a Second Language.

Open enrollment classes are available at the Union County College Elizabeth and Cranford campuses. Companies may also arrange classes for their employees at a time and location for their convenience, either one of our campus locations or at your business facility. For a complete schedule call 908-965-2359 or 908-527-7207 or email ibi@ucc.edu.

Although these classes are provided at no charge to the company, employers must pay their employees the customary hourly wage while in training. Companies are not required to provide a minimum number of employees for

training, pay for class tuition, fill out complicated paperwork, or disclose financial statements. Consortium classes are also possible through professional, business or industry associations.

Day	Date	Class	Campus
Wednesday	4/10/2013	Excel 2	Cranford
Friday	4/12/2013	Word 2	Elizabeth
Wednesday	4/17/2013	Outlook	Cranford
Friday	4/19/2013	Outlook	Elizabeth
Wednesday	4/24/2013	Word 1	Cranford
Friday	4/26/2013	Excel 1	Elizabeth
Wednesday	5/1/2013	Word 2	Cranford
Friday	5/3/2013	Excel 2	Elizabeth
Wednesday	5/8/2013	Windows	Cranford
Friday	5/10/2013	Word 1	Elizabeth
Wednesday	5/15/2013	Outlook	Cranford
Friday	5/17/2013	Word 2	Elizabeth
Wednesday	5/22/2013	Excel 1	Cranford
Wednesday	5/29/2013	Excel 2	Cranford
Friday	5/31/2013	Outlook	Elizabeth

All Classes 8:30 am - 5:00 pm

BeyondDANCE

Where dance is fun again!

Beach Week

July 8th - July 12th • 9:00am - 12:00pm
ages 3-5 and ages 6-8

Come for a week of celebrating summer - and the beach - right here in our studio! Our days will be filled with lots of dancing, storytelling, arts & crafts and MORE! Perhaps your camper will take a Sea Cruise or learn to Hula and even go Sunlin' USA.

Disney Fun

July 15th - July 19th • 9:00am - 12:00pm
ages 3-5 and ages 6-8

Take a magical journey through music and dance with the Disney Classics and your favorite characters. Our days will be filled with lots of dancing, acting, games, storytelling and arts & crafts. Imagine your camper sings with a princess, flies with the fairies and plays with Mickey, Minnie and the gang.

Arts & Crafts Adventure

July 22nd - July 26th • 9:00am - 12:00pm
ages 3-5 and ages 6-8

Spend the week relating your art & craft projects to dance! Along with dancing, the campers will enjoy the creativity of drawing, painting and creating works of art. Use your imagination to bring your art to life!

Broadway Review

August 5th - August 9th • 9:00am - 12:00pm
ages 6 and up

An amazing theatrical experience for anyone with a passion for the stage! Enjoy singing, acting and dancing while learning scenes from famous shows. Prepare to showcase your talents on Friday!

Doc McStuffins Playtime

August 5th - August 9th • 9:00am - 12:00pm
ages 3-5

A week of dancing and games that bring our Inner Doc McStuffins to life. Campers will bring their stuffed animals and toys, play with them and learn to care for them. We will focus on friendship and kindness.

Summer Games

August 12th - August 16th • 9:00am - 12:00pm
ages 3-5 and 6-8

A week of dancing and games that concentrate on physical activities for a healthier child. We'll do relays, kick ball, jump rope, hop scotch, yoga, aerobics, obstacle courses - all incorporating music, dance and much more!

Nutcracker in August

August 19th - August 23rd • 9:00am - 12:00pm
ages 3-5 and 6-8

A week of dancing and games related to all things Nutcracker. Campers will watch footage from the Ballet, re-enact Nutcracker scenes, learning the story and focusing on Ballet Technique.

For all classes: Register ONLINE: www.BeyondDanceNJ.com
COST: \$250 per student per class
10% discount on 3 or more camp sessions. *Please bring your own snack and drink each day.
123 N. Union Ave. Cranford, NJ 07016 • 908-272-2522

WHY NOT HAVE A BOWLING PARTY?

- BIRTHDAYS
- CORPORATE
- PRIVATE PARTIES

Summer Leagues now forming



No one sits on the bench!

Meet new friends!

Call Now to Reserve

GARWOOD LANES

Garwoodlanes.com
346 North Avenue
Garwood, NJ 07027
908-276-2040

The Kids Palace

Daycare & Learning Center

Register your Child Today!!



thekidspalace.org
908 276 2700 Fax 908 276 2785
44 South 21st Street
Kenilworth NJ 07033

Please join us for a
"IT'S GRAVY NOT SAUCE"
PASTA DINNER

to support
 David Brearley 7th Grade Class
FRIDAY, APRIL 26, 2013 - 6:00 P.M.
 at the

KENILWORTH VFW (DOWNSTAIRS)
 33 S. 21st Street, Kenilworth NJ

ADMISSION IS \$10 PER PERSON

Full dinner: pasta, meatballs,
 salad, bread, dessert, beverages.

50/50 AND BAKE SALE TOO!

For more information
 or to purchase tickets

CALL DARLENE AT (908) 447-9421
 or email: saldeemarc@verizon.net

The Kenilworth Community United
 Methodist Church's

THRIFT SHOP

OPEN ON SATURDAYS

at 10 AM and closing at 3 PM.

We have lots of newer items,
 kitchen items, shoes, pocketbooks, books,
 knick-knacks, and jewelry and more.

Come check us out every Saturday.

CRAFT AND VENDOR FAIR

SUNDAY, MAY 19TH, 2013

10: am to 5:00pm

ST. THERESA SCHOOL

540 Washington Avenue

Kenilworth, NJ, 07033

LIMITED SPACE AVAILABLE

For information and Registration Form

Call Daria Fanelli @ (908)276-7220

ext.30 or e-mail Linda Koski

Linda.Koski@sainttheresakenilworth.org

Kenilworth Silver Card Association, Inc.

PBA LOCAL #135

**Cordially invites you to attend our annual Silver
 Card Awards and Business Networking Event**

Honoring 2013 Silver Card Recipients

Father Lito – St. Theresa's Church

Bob Ring – Meyer & Depew

Michael Devlin – Kenilworth Police

Wayne Fennes – Kenilworth Police

2013 Gold Card Recipient

Mark David – Kenilworth Police

Date: May 7, 2013

Time: 6:30 PM

Garlic Rose Bistro

28 North Ave West

Cranford, NJ 07016

Attire: Business Casual

Cost: \$50.00 per person

The event includes a 3-hour cocktail reception with served
 appetizers, beer, wine, sangria and soft drinks. Cash bar for all
 other beverages.

For Reservations or to place an ad in the souvenir journal,
 please call:

Rob Schielke at (908) 931-9030

Ken Mentzel at (732) 594-5446

KPD@njdriver.com



Reserve Now
Only 100 tickets available

NOW OFFERING BARBERING

NEW BARBERING PROGRAM

Start Class - May 13, 2013

Ask about \$2,500 Scholarship!

(This course is not yet accredited.)

CAPRI
 INSTITUTE
 COSMETOLOGY TRAINING CENTERS



CAPRI CAMPUSES:

Clifton (873)772-4610 Kenilworth (908)984-1330 Paramus (201)599-0880 Brick (732)920-3600

1-800-BE-CAPRI

www.CapriInstitute.com

Scholarships for our 1200 Hour Cosmetology or 600 Hour Barbering Program may not be combined with any other scholarships and will be awarded upon completion of the course within expected graduation date.

**Clases de cosmetología en español
 en Kenilworth & Clifton**



**1085 central avenue,
 clark, nj 07066
 732-388-6511**

Monday through Friday

Join us for Our Sunset Specials

From 3pm to 6pm. All inclusive.
 Choice of Soup or Salad. Choice of Entrée,
 Coffee or Tea and Dessert
\$15.99 per person

Monday through Thursday

½ Price ½ Price ½ Price
Buy One Burger and get a
Second Burger 1/2 Price!

Includes French Fries. Toppings additional.
 18% gratuity will be added on the full price of the bill before promotion.

Sunday's Prime Rib Special

Includes
 Choice of Soup or Salad
 Prime Rib with Potato and Vegetable
 Coffee or Tea and Dessert
Queen Cut: \$16.99
King Cut: \$19.99

CONNECTICUT FARMS – TODAY'S KENILWORTH AND UNION, NEW JERSEY

Submitted by Michael Yesenko, Kenilworth Historian

In 1667, the group that followed Reverend Pierson created a small village southwest of Newark which they called Connecticut Farms because the land, rivers, plant and animal life reminded them of Branford, Milford and Guilford, Connecticut. The Wade, Headley, Lyon, Whitehead, Townley, Bonnell, Crane, Osborne and Meeker families started to build small wooden homes on this land.

A New England type of village was created in which life was centered on a meeting house or church. Public lands were set aside for pastures, markets and military training. This colonial village, under the allegiance of British rule, became today's towns of Kenilworth and Union, N.J.

These new established towns and villages, Newark, Connecticut Farms (Kenilworth &

Union) and Elizabeth were all part of Essex County. They were close together geographically and their borders touched each other. Today's Newark Liberty Airport is in both Elizabeth and Newark. Essex was another British affirmation.

Elizabeth became the major crossover point from Staten Island, NY for the British because Staten Island was the main established port for the British and their ships during colonial times and during the American Revolutionary War.

These paths became roads and one of the most famous during the American Revolutionary War was Galloping Hill Road. It has been written about and parts of it exist in today's Union and Kenilworth, NJ.

Another path was created by today's Michigan Avenue by colonists which was used

later by General Von Lossburg, a Prussian (German) General for the British during the American Revolutionary War. His second division went through this path as well as spies and patriots using the Beacon Hill watch known as Tin Kettle Hill or Sayre's Hill in today's Kenilworth.

A little over one hundred years later, when the American Revolutionary War began in 1775, by law all residents were required to own arms to defend themselves from the British.

Land Surveys - April, 1665, Robert Bond was given a warrant to have 360 acres of land surveyed: Leonard Headley and his wife had 120 acres surveyed. March 8, 1676, Henry Lyon had 360 acres surveyed; Isaac Whitehead had 180 acres surveyed; March 1, 1676, Benjamin Wade had 120 acres surveyed; March 27, 1676, Stephen Crane had 120 acres surveyed; April 10, 1676, Stephen Osborne and Nathaniel Bonnell had 108 acres surveyed; May 31, 1676, Joseph Meeker had 180 acres surveyed; and on June 14, 1676, Benjamin Wade had 144 acres surveyed.

All members of Connecticut Farms agreed to work together to construct a church, which also served as a meeting house. A horse hitched to a wagon was a means of travel. The dirt roads had to be cleared of rocks, ruts, tree branches and bushes making travel difficult.

Puritan Practices – In May 1668 the first New Jersey General Assembly was called by Governor Philip Carteret and met in Elizabethtown. They adopted a criminal code which provided death for; burglary, murder, bearing false witness and for being a witch.

Children age 16 years or older who attacked their parents could be executed unless they could prove they were defending themselves. A person convicted of burglary had a capital T branded on their hand for Thief.

The Best Chicken in New Jersey



"Don Alex"

Restaurant

"The authentic Peruvian kitchen with original flavor"



**Celebrating the
GRAND OPENING
of our
Kenilworth Location!**

**LIVE MUSIC
Fri & Sat
6 pm - 9 pm
Kenilworth Location**

BYOB

We Host Private Parties & Corporate Events!
www.Donalexrestaurant.com **908-349-8060**
625 NORTH MICHIGAN AVE. KENILWORTH

Visit our other locations: In UNION at 1988 Morris Ave. • In ELIZABETH at 356 Rahway Ave.

\$2 OFF

ANY PURCHASE
Of \$10 or more

"Don Alex" Restaurant
Limit 1 per customer. Cannot be combined with other offers or discounts. Exp. 5-15-13

\$5 OFF

ANY PURCHASE
Of \$20 or more

"Don Alex" Restaurant
Limit 1 per customer. Cannot be combined with other offers or discounts. Exp. 5-15-13

Marion & Jacobson

General Contractors

Bringing a Century of Craftsmanship Home

908-245-3030 Interior & Exterior Renovations





Slate	Kitchens
Copper	Bathrooms
Stonework	Roofing
Foundations	Gutters
Walkways	Chimneys
Decks	Windows
Patios	Doors
Additions	Siding

www.marionandjacobson.com

Licensed & Insured • Free Estimates
Emergency Repair Service Available

Kenilworth, NJ NJIIC# 13V1100652000

GATEWAY CHAMBER

Members of Kenilworth Chamber of Commerce, an affiliate of the Gateway Regional Chamber of Commerce, are welcomed in all Gateway events. For information call the Chamber at 908-352-0900 or visit our website at www.gatewaychamber.com

8:30 AM APRIL 10

KENILWORTH CHAMBER MEETING

Access Self Storage, 750 Boulevard, Kenilworth

6:00 PM APRIL 11

24TH ANNUAL MAYORS DINNER

Newark Airport Marriott, 1 Hotel Road, Newark

6:00 PM APRIL 16

IRISH BUSINESS ASSOCIATION NETWORKING

Molly Maguire's Irish Pub, 1085 Central Avenue, Clark

8:00 AM APRIL 17

UNION COUNTY ELC MEETING

Kenilworth Inn, Boulevard & 31st Street, Kenilworth

8:30 AM APRIL 23

LINDEN CHAMBER MEETING

Hosted by Epicor, Inc. & Mercer Company, Inc.

Hampton Inn, 501 West Edgar Road, Linden

8:30 AM APRIL 24

CLARK CHAMBER GROUP

Hosted by Shoprite of Clark

Location TBA. Please check our website

BE A SUPERHERO FOR KIDS WITH CANCER!

Whether you decide to shave your head, volunteer, or donate, we hope you'll be a part of the excitement. St. Baldrick's events happen throughout the year and in every part of the world. Each event is unique, but they're all focused on one goal—curing childhood cancer. Have fun while raising money for a very serious cause.

The St. Baldrick's Foundation is a volunteer-driven charity that funds more in childhood cancer research grants than any organization except the U.S. government. Get involved and you'll be giving hope to infants, children, teens and young adults fighting childhood cancers. Please sign up to be a shaveree and raise money for the cause, or sponsor a shaveree by donating.

For more information contact:

David Krill, at 908-591-3410.

Or visit the event website

stbaldricks.org/events/mypage/9518/2013

Click JOIN, or DONATE to support the cause.



Shaving the Way to Conquer Kids' Cancer

Join the Kenilworth Volunteer

Fire Department and Rescue Squad

at their station located at

491 Washington Avenue in Kenilworth

for their St. Baldrick's event

on April 28, 2013 from 2-6 p.m.



MASON CONTRACTOR

COMMERCIAL – RESIDENTIAL

Steps • Sidewalks • Patios

Pavers • Retaining Walls

Brick, Block or Stone Work

FREE ESTIMATES

3rd generation:
Family owned
& operated for
over 60 years!

Angelo DiDolce, Jr.

908-241-3057

Cell 732-620-5432

Roselle, NJ 07203

Lic.# 13VH0266010



WANTED:

ALL CARS & TRUCKS: JUNK OR NOT

Late Model Foreign & American New & Used
Auto & Truck Parts:

- Motors • Transmission
- Auto Glass • Computers
- Tail Lights • Doors
- Fenders • AC Compressors

Junk Tow Away

Fast Pick Up

24 HR Service

732-381-2646

Night Towing 732-496-1633

1 Dudley Ct. & Rt. 1 South, Avenel, NJ

Across from Sansone Auto Mall.

10% OFF ALL AC COMPRESSORS

With this ad. Expires 5/11/13.

TIM CARBONE

SCHOLARSHIP FUND PRESENTS

TEXAS HOLD 'EM TOURNAMENT

DATE: SATURDAY, APRIL 20th 2013

TIME: 5:30PM

FIRST CARDS DEALT: 6:30PM

PLACE: VFW HALL 33 SOUTH 21ST STREET, KENILWORTH, NJ.

NO LIMIT ELIMINATION TOURNAMENT FORMAT

- \$100 Buy-In \$10,000 Chips
(extra \$1,000 chips with pre-registration)
- Cash only accepted at event
- Blinds start at \$100 / \$200
- Blinds increase every 20 minutes
- Cash Prizes - 1st place minimum \$1,000
- Dealers provided

CASH
PRIZE

1ST
PLACE
\$1,000

- Registration includes: Sandwiches, Soda and Water – CASH BAR

Texas Hold 'Em Tournament Pre-registration Form

(Pre-register by April 10th)

Send Check with Form to: Tim Carbone Scholarship Fund, 39 N. 6th ST, Kenilworth, NJ 07033)

Name _____ Phone # _____

Address _____

E-mail _____

_____ I will be able to attend the Texas Hold 'Em Tournament

_____ I will NOT be able to attend, but enclosed is my donation for \$ _____

For Questions Call: Russ Swiatek, (908) 751-1632, rdewas@gmail.com



*Visit our website
on April 30th at
www.alarishealth.com and
the 500th person to sign
up for the newsletter will
receive a mini ipad*

Specializing in
Sub Acute Rehabilitative Care and Long Term Nursing Care.

Alaris Health at Riverton
boasts a broad array of services in our
Sub Acute and Long Term units such as:

- Speech, Physical and Occupational Therapy
- Specialized Orthopedic Rehab
- Dementia & Alzheimer Care
- CHF Program
- Stroke Program
- Tracheostomy Care
- Wound Care
- IV Therapy
- Respite Stays
- Hospice Care

Visit Alaris Health at Riverton
on April 16th 3-5pm
to test out our OmniV Virtual Rehabilitation
and receive a door prize.

1777 Lawrence Street • Rahway, NJ 07065
(732) 499-7927

JERSEY LANDSCAPE & GARDEN SUPPLY

7 DAYS A WEEK

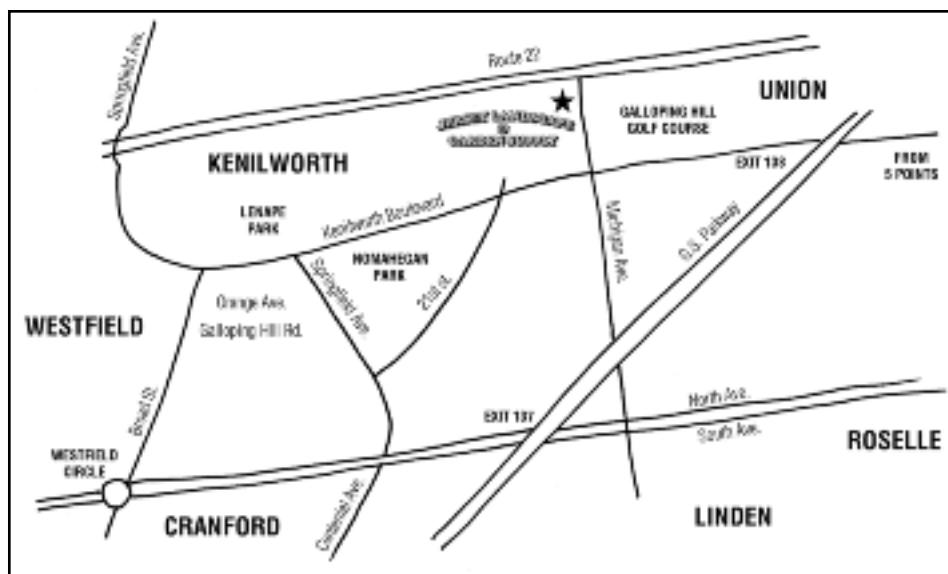
Hours: Monday – Saturday 7:30 am – 5 pm
Sunday 8:30 am – 3:00 pm

908-688-8333

**SERVICING LANDSCAPERS,
MASONS & HOME OWNERS**

528 N. Michigan Ave. Kenilworth, NJ

Largest Display of
Cambridge Pavers
in Union County



See above display and others at www.cambridgepavers.com

SOIL

Prices
per yard

Black Topsoil	\$32
Jersey Brown Soil	\$32

MULCH

Black Dyed	\$28
Brown Dyed	\$28
Red Dyed	\$28
Hardwood	\$18
Play Ground	\$32

QUARRY BASE MATERIALS

Concrete Sand	\$42
¾ Clean Stone	\$38
Stone Dust	\$34
QP	\$34

DECORATIVE STONE

3/8 Red Stone	\$66
¾ Red Stone	\$64
¾ Pearl Pebble	\$80
2-4 Pearl Pebble	\$80
3/4 Arctic White	\$82
¾ Riverbed	\$56
1 ½ Riverbed	\$58
2-4 Riverbed	\$58

**We accommodate
the trade
as well as the
do-it-yourselfers!
We are always
ready to assist.**

HARDSCAPE

Cement



Concrete
Block



Brick



Curbing



Belgium
Block
Diamond
Blades



Limestone
Treads



Polymeric Sand
Paver Sealer
Paver Cleaner

**FREE
Same Day Delivery
5-Yards or more**

DRAINAGE

Pipe • Catch Basins

LAWN & GARDEN



Grass – Seed
Fertilizers
Peat Moss

TOOLS

Mason Tools • Shovels • Rakers



Iron Tool Co.