

K BUSINESS + LIFE KENILWORTH

KENILWORTH CHAMBER OF COMMERCE



Issue #61

February 2013

The Kenilworth Chamber of Commerce is an affiliate of the Gateway Regional Chamber of Commerce.

**KENILWORTH
CHAMBER MEETING
FEBRUARY 13, 2013
8:30 AM
ATLANTIC FEDERAL
CREDIT UNION
37 Market Street
Kenilworth, NJ**

lifeinlinden.com

The website features up to date articles, a calendar of events, archives of LiL, photo albums, and advertisements. Businesses and residents are encouraged to submit items for publication through the site.

PRSR STD-A
US POSTAGE
PAID
Permit #1081
Newark, NJ

TASTE OF KENILWORTH WILL BENEFIT KENILWORTH HIGH SCHOOL SENIORS

The Kenilworth Chamber of Commerce event was a big success thanks to volunteers, sponsors and restaurants.



Volunteers from Access Self Storage Pam Baur and Edna Perez



Kamai Assad from Sign-a-Rama

Photos of Taste of Kenilworth held on January 22, 2013 at BoulevardFive72 can be found at kenilworthbusinesslife.com



Back Yard BBQ: Kean University "Be the Change" volunteers, Patricia Oviatt & Shena Richardson.



Gateway Chamber V.P. Kate Conroy and Kenilworth Chamber President Isabel Coronejo. Coronel of Access Self Storage.



Rinaldi's: John Goncalves, Judy Haag



O Lagar Restaurant: Fabian Alaba & Nash Pinto



Donna & Co. Chocolatiers: Rachel Pakay & Diane Pinder



Volunteer Charlie Olvia of Charlie "O" DJ Service



Star of India: Amar Nath Popli, Nitu Satija, Armaan Popli, Sagar Satija.



BoulevardFive72: Schott Snyder & Andrew Herits



Blackthorne: Eugene Gillepsie, Bania Teixeira, Ali Osmani.

POSTAL CUSTOMER



THIS SPACE IS NOW AVAILABLE FOR ADVERTISING!!!

Demand for advertising in this space has been high. It is now available on a first come first served basis. Call Tina today to reserve the space in this or other Renna Media publications.

Each month this newspaper is mailed to every home and business in Kenilworth

Reserve space in the next issue. Call Tina today at 908-418-5586 or email info@rennamedia.com

BUSINESS + LIFE KENILWORTH

Kenilworth Business Life is published by Renna Media in cooperation with the Kenilworth Chamber of Commerce, which is an affiliate of the Gateway Regional Chamber of Commerce.

Over three thousand newspapers are printed monthly and distributed free to every postal patron in Kenilworth.

Although great care has been taken to ensure the information contained within is accurate, Gateway Regional Chamber of Commerce assumes no liability for errors or omissions.

Gateway Regional Chamber of Commerce welcomes the comments and concerns of its readers put into writing and sent to:



P.O. Box 300 • Elizabeth, NJ 07207-0300
908-352-0900 • 908-352-0865 Fax
Email us at info@gatewaychamber.com

Vice President: Kate Conroy
kateconroy@gatewaychamber.com

Kenilworth Chamber of Commerce Chairwoman
Isabel Coronel: 908-259-1020
Kenilworth@access-store.com

KENILWORTH, NJ

www.kenilworthnj.com

MAYOR:

Kathi Fiamingo

COUNCIL MEMBERS:

Peter Corvelli	Tony DeLuca
Toni Giordano	Brian Joho
Scott Klinder	Fred Pugliese

BOROUGH PHONE NUMBERS

Emergency	911
Police Department	276-1700
Fire Prevention	276-8935
Borough Clerk	276-9090
Tax Office	276-5800
Board of Health	276-2740
Building Inspector	276-5802
Public Works	276-5073
Library	276-2451
Senior Center	272-7743
Kenilworth Board of Education	276-5936

www.kenilworthschools.org

© 2013 Contents of this newsletter cannot be reproduced without written consent from the Gateway Regional Chamber of Commerce.

ADVERTISING & PRESS RELEASES

Inquiries concerning advertising and submissions of press releases can be made to Renna Media LLC via phone, fax or email to:

TINA RENNA

Email: TinaRenna@RennaMedia.com

Phone: 908-418-5586 • Fax: 908-709-9209

2013 REORGANIZATION SPEECH



This month the Council will be honoring the members of our Fire Department and Rescue Squad and the Police Department for their actions before, during and after Sandy. They will be recognized at our council meeting of February 13, 2013. Please feel free to join us at 8:00 p.m. to show your support.

I would also like to congratulate our Pop Warner Midget Cheerleading Squad who won first place in the Pop Warner National Championship Competition in their division. This is a tremendous accomplishment for them. The girls and their coaches worked hard all season and brought home the trophy for their efforts. The members of the squad are: Alondra

Alonso, Madison Calello, Jessica Larmore, Jessica Cittadino, Sabrina Awad, Faith Kelly, Olivia Siragusa, Isabelle Soares, Sara Cortesao, Jamie Goncalves, Dina Cascarano and Chevelle Gassman. The coaches who deserve to share in the spotlight are Nina DaGrado, Tina Calello, Terry Loneker, Marisol Alonso, Meghan Gilligan and Cassy Gorka. Congratulations to all of you!

Chief Grady has been visiting the schools to discuss school safety. The Chief, together with Captain Hannon, Sgt. Sims, School Resource Officer Pickton and other members of the Kenilworth Police Department have been reviewing each school's security measures, as well as lock down drills for the children. They are working with the administrations at Harding School, David Brearley Middle/High School, as well as St. Theresa's Parochial School to keep the children safe and secure. All three schools can now be monitored directly from the Kenilworth Police Department with remote cameras and the police have and will be training in the schools. Thanks to the Kenilworth PBA Local 135 St. Theresa's School is now wired with cameras that are monitored directly at Police Headquarters.

The Chief and the school administrations are doing their utmost to keep all of our children safe and secure. They ask the parents to help them by following the security measures at the schools even though it may cause a delay or be an inconvenience. The safety of our children is our primary concern and everyone's cooperation is necessary.

To this point the winter has been mild. We still have a long way to go until spring. Please everyone keep safe and warm and remember, if it does snow, do not park on the odd-numbered sides of the street or in municipal lots until the snow is cleared.

Mayor Kathi Fiamingo

908-245-6262

Monday – Saturday:
11 am – 10 pm
Sunday: 4 pm - 9 pm

FREE DELIVERY

290 Michigan Avenue
Kenilworth, NJ 07033

Tel: 908-241-0221
721 Boulevard
Kenilworth, NJ 07033
www.furnitureconnxion.com

Hours: Mon - Fri 10am-7pm
Sat 10am-6pm
Sun 12pm-5pm
Discount Prices
Fast Delivery

Living Rooms • Bedrooms • Sofa Beds • Dining Rooms
Youth • Mattresses • Futons & More

Roselle Park Summer Camp

"A Great Camp Makes a Great Summer"

June 24 – August 16, 2013 – 8 am to 6 pm

7:30 AM Drop off available!

K-8 Camp and Pre-school Camp

Fun and educational activities for all, in a pleasant learning environment!!

Programs & Clinics for 2013

Softball, Tennis, Baseball, Basketball, Soccer

Register for any 2 clinics & get the 3rd free!!

Also offered

5-week Reading & Writing / Math Program

from July 9th – August 8th – 3 days a week

Swim Lessons Available

from June 24th – August 9th

Open Registration Nights: March 20 & May 9

6 pm to 8 pm at Roselle Park High School

Check our website: www.rpsd.org

To enroll Call:

(908) 241-2851

Email:

summercamp@rpsd.org

- Great Facilities

- Excellent Staff

- Affordable Prices

• Choice of 3 to 5 Days
Per Week

• Full or Half Day
Schedules Available

• Convenient Weekly
Registration

NEW STREET BANNERS!

KCoC • Page 3 • February 2013

In an effort to beautify the Borough, the Kenilworth Chamber of Commerce has embarked on an initiative to update the current street banners.

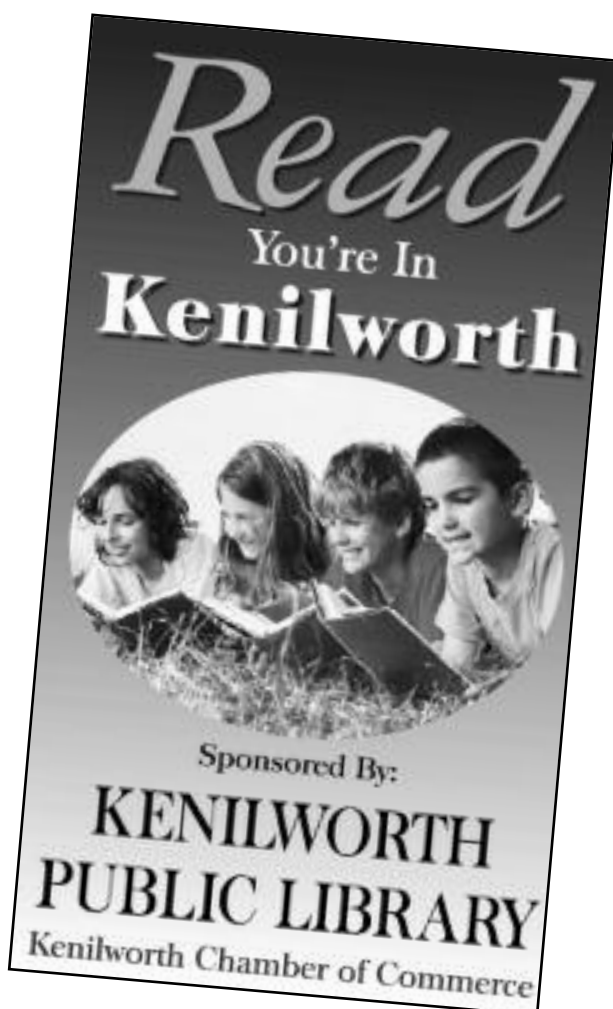
The banners will measure 60" long and 30" across with space on each for the sponsor's name, along with a picture and a specific word that applies to the sponsor. In the case of the library, the banner says, "Read You're In Kenilworth"

The cost to sponsor a banner is \$300.00 for Chamber Members and \$400.00 for non-members.

*If you prefer having your logo on the banner, we can do that for an additional cost of \$75 per banner!

Businesses may purchase as many banners as they wish. The banners will last a minimum of three years and will be placed on telephone poles along the Boulevard and Michigan Avenue in the Spring of 2013.

The proceeds of the Street Banner Program will benefit graduating Kenilworth high school seniors. Please call 908-352-0900 with any questions or to place your order!



GATEWAY CHAMBER

Members of Kenilworth Chamber of Commerce, an affiliate of the Gateway Regional Chamber of Commerce, are welcomed in all Gateway events. For information call the Chamber at 908-352-0900 or visit our website at www.gatewaychamber.com

8:30 AM FEBRUARY 13

KENILWORTH CHAMBER MEETING

Hosted by Maryann Small @ Atlantic Federal Credit Union, 37 Market Street, Kenilworth

6:00 PM FEBRUARY 19

IRISH BUSINESS ASSOCIATION NETWORKING

Molly Maguire's, 1085 Central Avenue, Clark

8:00 AM FEBRUARY 20

EMPLOYER LEGISLATIVE COMMITTEE

Kenilworth Inn, Boulevard & S. 31st Street, Kenilworth

8:00 AM FEBRUARY 22

SOMERSET HILLS BUSINESS NETWORK

Olde Mill Inn, 225 Route 202, Basking Ridge

8:30 AM FEBRUARY 26

LINDEN CHAMBER MEETING

Hosted by Dennis Purves @ Linden Public Library, 31 East Henry Street, Linden

8:30 AM FEBRUARY 27

CLARK CHAMBER MEETING

Hosted by Provident Bank @ Holiday Inn, 36 Valley Road, Clark

KENILWORTH CHAMBER OF COMMERCE IS OFFERING RECESSION RATE OF JUST \$100 FOR NEW MEMBERS

Is the economy getting you down? Now's the time to join your local chamber! Like a good insurance policy, the chamber is here when you need it. From networking to personal introductions to other members to money-saving discounts on services you have to buy anyway,

there are so many reasons to join – and only one not to. If money has gotten tight during these economically harsh times, the chamber's Recession Rate of just \$100.00 is for you. Call or email Kate Conroy (908) 352-0900, kateconroy@gatewaychamber.com for the

special application and grow your business!

The Gateway Chamber is the umbrella organization for the Kenilworth Chamber, which means when you join at the local level, you automatically become a member at the regional level, with all the extras and perks.

**SAVE MORE
WITH ONLY
3 1/2%
SALES TAX**

CELEBRATING OUR 64TH YEAR
JACOBSON'S
DISTRIBUTING COMPANY

**BIG SAVINGS
IN OUR
BEDDING
DEPARTMENT**

*An Elizabeth
Tradition
since 1949*

725 Rahway Ave - Elizabeth - 908-354-8533

Open Mon. & Thurs. 10 am 'Til 8 pm; Tues., Wed. & Fri. 10 am 'Til 6pm;

Open Saturday 10 am 'Til 5 pm; closed Sunday's

We Accept: CASH



and Personal Checks

APPLIANCES • BEDDING • ELECTRONICS • AUDIO & VISUAL

Not responsible for typographical errors. Bring us your best deal from any authorized dealer and we will gladly beat their offer on any item we carry.

WE CARRY A FULL SELECTION OF GAS GRILLS, REFRIGERATORS, WASHERS, DRYERS, RANGES, DISHWASHERS, BIG SCREEN TV'S AND BEDDING.

**Free
Delivery**

**\$25 OFF FOR KENILWORTH
RESIDENTS & BUSINESSES**

ONE PER CUSTOMER. CAN NOT BE COMBINED WITH ANY OTHER OFFER. MINIMUM PURCHASE OF \$299.00.
MUST PRESENT THIS COUPON AT TIME OF PURCHASE. OFFER EXPIRES 3/11/13.

CONNECTICUT FARMS – TODAY’S KENILWORTH AND UNION, NEW JERSEY

Submitted by: Michael Yesenko, Kenilworth Historian

CHAPTER III - CONNECTICUT FARMS SETTLED IN 1667

In 1667, the group that followed Reverend Pierson created a small village southwest of Newark which they called Connecticut Farms because the land, rivers, plant and animal life reminded them of Branford, Milford and Guilford, Connecticut. The Wade, Headley, Lyon, Whitehead, Townley, Bonnell, Crane, Osborne and Meeker families started to build small wooden homes on this land.

A New England type of village was created in which life was centered on a meeting house or church. Public lands were set aside for pastures, markets and military training. This colonial village, under the allegiance of British rule, became today’s towns of Kenilworth and Union, New Jersey.

These new established towns and villages, Newark, Connecticut Farms (Kenilworth & Union) and Elizabeth were all part of Essex County. They were close together geographically and their borders touched each

other. Today’s Newark Liberty Airport is in both Elizabeth and Newark. Essex was another British affirmation.

Elizabeth became the major crossover point from Staten Island, NY for the British because Staten Island was the main established port for the British and their ships during colonial times and during the American Revolutionary War.

These paths became roads and one of the most famous during the American Revolutionary War was Galloping Hill Road. It has been written about and parts of it exist in today’s Union and Kenilworth, NJ.

Another path was created by today’s Michigan Avenue by colonists which was used later by General Von Lossburg, a Prussian (German) General for the British during the American Revolutionary War. His second division went through this path as well as spies and patriots using the Beacon Hill watch known as Tin Kettle Hill or Sayre’s Hill in today’s Kenilworth.

A little over one hundred years later, when the American Revolutionary War began in 1775, by law all residents were required to own arms to defend themselves from the British.

Land Surveys - April, 1665, Robert Bond was given a warrant to have 360 acres of land surveyed: Leonard Headley and his wife had 120 acres surveyed. March 8, 1676, Henry Lyon had 360 acres surveyed; Isaac Whitehead had 180 acres surveyed; March 1, 1676, Benjamin Wade had 120 acres surveyed; March 27, 1676, Stephen Crane had 120 acres surveyed; April 10, 1676, Stephen Osborne and Nathaniel Bonnell had 108 acres surveyed; May 31, 1676, Joseph Meeker had 180 acres surveyed; and on June 14, 1676, Benjamin Wade had 144 acres surveyed.

All members of Connecticut Farms agreed to work together to construct a church, which also served as a meeting house. A horse hitched to a wagon was a means of travel. The dirt roads had to be cleared of rocks, ruts, tree branches and bushes making travel difficult.

Puritan Practices – In May 1668 the first New Jersey General Assembly was called by Governor Philip Carteret and met in Elizabethtown. They adopted a criminal code which provided death for; burglary, murder, bearing false witness and for being a witch.

Children age 16 years or older who attacked their parents could be executed unless they could prove they were defending themselves. A person convicted of burglary had a capital T branded on their hand for Thief.

DeMAIO JEWELERS

608 BOULEVARD • KENILWORTH

908 272-4177

www.demaiojewelers.com

Celebrating our 60th ANNIVERSARY
Family owned and operated.



ANNIVERSARY SPECIAL

Special ends
March 9, 2013

with every
purchase of \$100.00
**RECEIVE YOUR
CHOICE OF
CULTURED
PEARL PENDANT
OR
EARRINGS FREE!**

**PURCHASE \$200.00
OR MORE AND
RECEIVE
THE COMPLETE SET!**

Fine Quality Jewelry at Discounted Prices.

We Also Offer a Full Line of
Affordable Sterling Silver Jewelry.

Custom Remounting & Design,
Jewelry & Watch Repairs.

All Major Watch Brands at Discounts
Limit one offer per customer.

Kenilworth
Nail Salon

Manicures • Pedicures • Waxing
28 North 20th Street
Kenilworth, NJ 07033
908-325-6184

By appointment
Opened
Monday - Saturday

FREE LOCAL DELIVERY

LINO BEDDING & FURNITURE

TOP NAME BRAND MATTRESSES

BEDROOMS • SECTIONALS • SOFABED • CHAISE
DINING SETS • FUTONS • OTTOMAN
RECLINER • LAMPS • END TABLES • BAR STOOLS

908-296-1353

WE CAN HELP YOU GET ORGANIZED



908-259-1020

750 Boulevard
Kenilworth, NJ 07033

www.accessselfstorage.com

**50% OFF
FIRST MONTH**

New customers only. Expires 3/11/12.



1-800-TEAM-LAW®

TEAMLAW.COM

TOBIN REITMAN GREENSTEIN CARUSO WIENER KONRAY & KESSLER



- Motor Vehicle Accidents
- Slip & Fall Accidents
- Dog Bites
- Medical Malpractice
- Legal Malpractice
- Wrongful Death
- Birth Injuries
- Nursing Home Neglect
- Unsafe Products
- Employment Cases
- Traffic Violations/DUI
- Workers Compensation
- Social Security
- Immigration
- Construction Site Accidents
- Boating Accidents

Serving the Union County Area Since 1965
TeamLaw.com

Se Habla Español • Fala-Se Portuguese

Main Office: 136 Central Avenue, Clark 732.388.5454

Branch Offices: (By Appointment Only)

Elizabeth • 908.351.3322
Westfield • 908.654.7337
Perth Amboy • 732.738.7774
New Brunswick • 732.246.7755

Summit • 908.598.0300
Edison • 732.902.2007
West New York • 201.861.1494
Plainfield • 908.756.9209

Orange • 973.672.6551
Newark • 973.622.1122
Jersey City • 201.653.0101

CONTRACTING COMPANY COMES TO PBA RESCUE

McAuliffe Contractors LLC, originally started by John E. McAuliffe and currently run by John's son Tom, has been a part of the Kenilworth community for over 35 years. When they heard that the Kenilworth PBA was in need of assistance with a flooding problem due to years of improper drainage, they stepped in and donated their services immediately. "We knew that this was a problem that had been going on for many years and we also knew that we had the resources to put in a water management system that would remedy this problem. We always want to help the local community and we felt that it was our duty to help," says President, Tom McAuliffe.

This structural contracting company has been working throughout the state of New Jersey to remedy various structural issues that often come up in this area. Specializing in anything from termite damage to sinking foundations, McAuliffe is an expert in the field and was even called upon by to demonstrate the proper emergency shoring to support the houses with foundation wall collapses in Cranford due to Hurricane Irene in August of 2011.

The project at the Kenilworth PBA is a two part venture for McAuliffe. They have finished the first phase which consisted of installing an interior drain as means of managing the current seepage. Complications arose due to the shallowness and size of the original footing. The wall had to be underpinned (extending the footing deeper) to prevent possible undermining of the current footing during heavy rain falls. Without this underpinning, the structure could settle due to undermining, causing more damage in the future.

If needed, phase two will be started in the spring months and consists of installing the exterior drainage system, and properly regarding and re-pitching the soil to ensure suitable waterproofing to the exterior of the building.

FIREFIGHTERS TO TAKE POLAR BEAR PLUNGE

Some Kenilworth Fire Department members are participating in the Polar Bear Plunge in Long Branch, NJ on Saturday February 23, 2013.

Join or donate is <http://www.kintera.org/faff/home/searchforDavidKrillandIceholesTeam>.

This single-day Law Enforcement Torch Run for Special Olympics New Jersey event has raised more than 11 million dollars over the past 19 years through pledges collected by participants and donations from sponsors. The success of this event has advanced the goal of Special Olympics New Jersey, to provide free year-round training and competition in 24

Olympic-type sports to more than 22,000 children and adults with intellectual disabilities. The Plunge has helped to fund the creation of new programs, as well as expand existing programs.

Be a part of the fun. Join the thousands who will take the Plunge for Special Olympics New Jersey or support a Plunger.

BREARLEY HOSTS 1st AFRICAN AMERICAN READ-IN

Submitted by: Mr. David Novak –DBMHS Publicity Chairperson

This year Brearley will celebrate its first African American Read-In on Tuesday, February 19th at 6:30 P.M. Interested participants are asked to join in the festivities starting in the front hallway of the David Brearley Middle/High School at 401 Monroe Avenue, Kenilworth, NJ promptly at 6:30. This event is open to all ethnicities. Admission is free.

In addition, the David Brearley Language Arts Department is looking for anyone who would like to get involved. Specifically, they would love for you to consider participating in the live reading. Poems and short stories will be available in advance so that you may practice your reading of the piece.

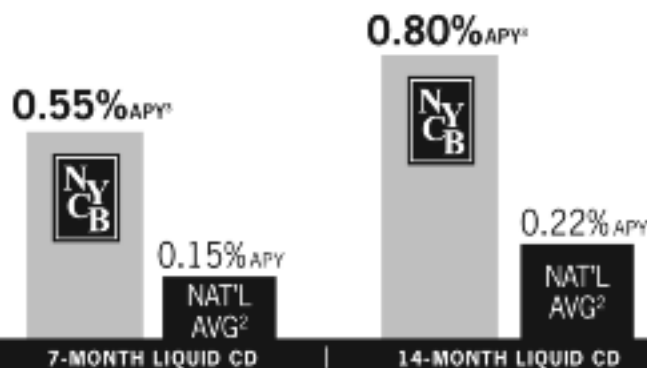
The African American Read-In is sponsored by the Black Caucus of the National Council of Teachers of English (NCTE), and endorsed by the International Reading Association. Its goal is to make the celebration of African American literacy a part of the tradition of Black History Month. February is Black History Month. 2013 marks the 24th National African American Read-In, celebrated by more than one million readers, from all ethnic groups throughout the United States.

If you would like to add to the celebration by joining in to the live reading, please contact Miss Nicole Warchol (7th grade Language Arts) at: nicole_warchol@kenilworthschools.com or Twitter: @MsNWarchol

KENILWORTH VFW POST # 2230 RECENTLY DONATED A 5X8 ALL-WEATHER AMERICAN FLAG TO ST. THERESA'S SCHOOL



(left, l-r) Aidan Meehan, Police Chief Grady, Kevin Chavez, Kenilworth VFW Commander Jeans, Skyler Huss, and Sgt. Sims.



myGSCB.com • (877) 786-6560



Garden State Community Bank

A Division of New York Community Bank • Member FDIC



¹2X Better represents a rate comparison. ²National Average at top 50 banks by similar product and deposit. Source: Informa Research Services, Inc., Calabasas, CA. www.informars.com. Although the information has been obtained from the various financial institutions as of January 29, 2013, the accuracy cannot be guaranteed as these financial institutions may change their programs and rates at any time. ³Annual Percentage Yields (APYs) are accurate as of publication date and are subject to change without notice. The minimum balance to earn the stated APY for the 7 month or 14 month Liquid CD is \$2,500. The interest rate remains fixed until maturity. Fees could reduce earnings. In order to qualify for the stated APYs, you must either have or open a core account (checking, savings, or money market account). If you do not have an existing core account and will be opening a new core account, you must open the core account on the same day that you open the CD. The CD must be opened with new money not currently on deposit with the Bank. Advantage Banking customers who open one of these advertised CDs will receive the stated APYs and will not receive the additional APY increase as part of their Advantage Banking Relationship package. A penalty may be imposed for withdrawals before maturity. The penalty will be waived if the withdrawal is made after the first six days of the account term or after the first six days following any partial withdrawal. The bank is not responsible for typographical errors. Offer may be withdrawn at the discretion of the bank at any time.

KENILWORTH SCHOOL DISTRICT NOW MOVES TO REFORM PRINCIPAL EVALUATION

KCoC • Page 7 • February 2013

Dr. Scott Taylor, Assistant Superintendent, Kenilworth Public Schools

Phase Two of the Kenilworth Public Schools' evaluation reform plan has had the district examining its performance review of the principals who lead Harding Elementary and Brearley Middle-High Schools. The first phase of the evaluation revamp led to a major change in the way teacher performance will be assessed. Instructors will now be evaluated based on a four-point scale, relying on 20 components that include aspects like lesson planning, instruction, professional growth, and others.

Principals' performance will now be determined by progress on six broad domains created by educator Kim Marshall that cover the following elements of leadership: diagnosis and planning, priority management and communication, curriculum and data, supervision and evaluation aligned with professional development, discipline and family environment, management and external relations with the community.

Teachers and principals will be evaluated throughout the year as administrators conduct "walkthroughs" in classrooms, hallways and administrative offices. Walkthroughs take place for five to 10 minutes. Supervisors, principals, or superintendents record notes about what they see and then debrief with the person being observed a few days later.

Walkthrough observation information will be documented using a web-based software program called T-Eval. Administrators will use laptops or electronic tablets to check appropriate indicators on a computerized form and add

narrative that summarizes the lesson. Every administrator will have access to colleagues' teacher evaluation forms in order to foster collaboration among school leaders who will work together to help individual teachers. In addition, teachers will have immediate access to their evaluations by logging in to the T-Eval system from any electronic device so they can promptly use feedback to make planning or instruction improvements.

Kenilworth's school leaders will be conducting between three and five evaluations for each member of the faculty every year. This will be an approximate 40% increase in the number of performance reviews currently being conducted. It will be our goal to further elevate the quality of instruction and improve student achievement by giving teachers and administrators more constructive performance feedback than ever before. The new evaluation systems are just one more way the Kenilworth School District is striving to be a world class, dynamic community of learners.

OPEN SCHOLARSHIP AUDITIONS ANNOUNCED



New Jersey Music and Dance Company will hold their third annual open auditions on March 23-24, 2013 from 1:00 - 5:00 PM for full and partial scholarships totalling \$2500.00 to several summer camps at the NJ Center for Media Arts at 1203 W. St. Georges Avenue in Linden. Students must pre-register for their audition time slot by calling 908-587-2787 by March 20th. Pictured are the 2012 Scholarship recipients whose names and towns are listed on the NJMDC website. For more information, visit www.njmdc.org for complete audition, camp and scholarship information. NJ Music and Dance Company is a non-profit organization founded in 2002 whose mission is to promote the arts and development of talent through education, programs and performances.



Kathleen Gwaldis

27 Years of Experience

cell: (908) 400-8409

www.kathleengwaldis.com

Kenilworth Real Estate Specialist



FREE MARKET ANALYSIS



Realtor Associate - Weichert President's Club
185 Elm Street, Westfield NJ, 07090
Office: (908) 654-6560, x 162

Now Serving Everyone In Union & Essex Counties



Banking you can trust at your not-for-profit Atlantic Federal Credit Union. Now everyone who lives, works, worships or attends school in Union and Essex counties can join along with their entire family.

- New & Used Vehicle Loans ■ Real Estate Loans ■ Federally Insured Savings, CDs & IRAs
- Free Checking with No Minimums, No Monthly Fees, No Per-Check Charges ■ Free On-Line Banking & Bill Payer ■ 28,000 ATMs Nationwide with No Surcharges, including 5,000 in 7-Elevens

1-908-245-1750
www.atlfedcu.com



Kenilworth
37 Market St.
Kenilworth, NJ
(across from A&P)

Elizabeth
210 Williamson St.
(by Trinitas Hospital)

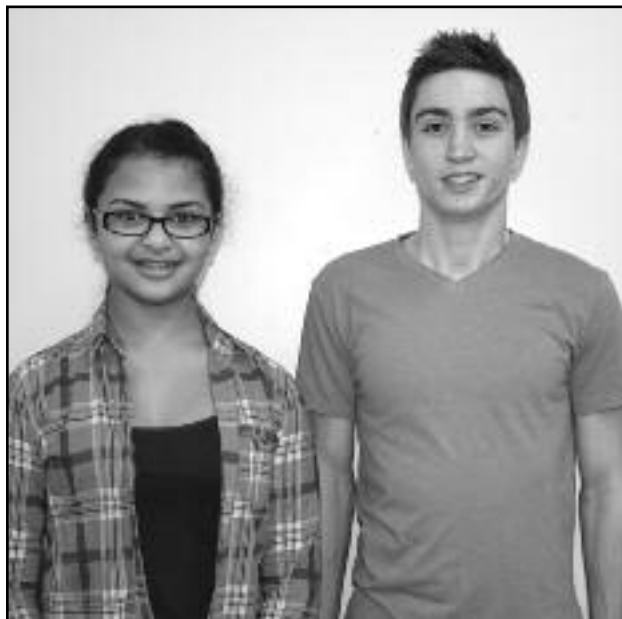
Newark
570 Broad St.
(fronts on Fulton St.)



DAVID BREARLEY MIDDLE/HIGH SCHOOL STUDENTS OF THE MONTH

Submitted by: Mr. David Novak

FEBRUARY 2013



(above, l-r) Salma Elmalah and Nick Zickgraf.

The David Brearley High School Student of the Month for February 2013 is senior Nick Zickgraf. Nick is a mature and highly motivated student, who was named "Comeback Player of the Year" by his soccer coaches for his strong rebound from a serious leg injury last year. As captain of both his varsity soccer team and varsity track team, Nick has displayed his strong leadership skills on the playing field. Nick also leads in his academic world, landing on the honor roll every marking period and garnering many Academic Booster Awards in Spanish, mathematics, history, and English. Nick uses his academic prowess after school as a Peer Tutor, as well. Congratulations, Nick on being the David Brearley High School Student of the Month!

We are happy to announce that Salma Elmalah is the David Brearley Middle School Student of the Month for February 2013. She

strives to always impress her teachers with her assignments. Salma is a focused student who takes her education seriously. She is always on task and is an inquisitive learner. Salma is kind to her peers, and often assists them when they struggle; a role model for her fellow classmates. Salma also plays an intricate role in the Middle School Play. Presently, she is helping to build the set for February 7th thru 9th production of the musical "Pippin." The producer proudly reports that that Salma makes great contributions to the play by always going above and beyond during set building, and has the ability to accomplish tasks intuitively. She does not need constant direction; she has common sense and maturity that is refreshing for a middle school student. Salma is a sweet, compassionate girl and an overall good human being. Congratulations, Salma, on being the David Brearley Middle School Student of the Month!

JANUARY 2013

The David Brearley High School Student of the Month for January 2013 is a very active and talented senior. Stephanie Hernandez consistently earns honor roll status and has distinguished herself as a scholar in many areas, including mathematics and English. Stephanie has been active in many Student Council activities and this past fall she was particularly involved in the planning of the Homecoming Dance. She is a member of the varsity fall, winter, and Competition Cheerleading squads. On all three of these teams Stephanie is the captain. Congratulations, Stephanie!

The Middle School Student of the month is a seventh grade boy that is a fine student and very kind to everyone. Dereck Torres possesses important moralistic values such as being respectful to others, helpful to his peers and teachers, and, above all, doing the very best that he can in all aspects and changes in his life. For example, he is a model contributor in Bruins

That Care Charity Club and very active in the Middle School Play. Teachers report that Dereck will always enter the room with a smile and a positive attitude to tackle the content of the day. He is truly an enthusiastic learner who routinely ignites and inspires others to learn. Congratulations, Dereck!



(above, l-r) Dereck Torres and Stephanie Hernandez.

OPEN HOUSE

FEBRUARY 20th

All Day Event from 1 pm – 7 pm

ASK ABOUT OUR SCHOLARSHIPS!

CAPRI INSTITUTE
COSMETOLOGY TRAINING CENTERS

CAPRI CAMPUSES:

Clifton (973)772-4610	Kenilworth (908)984-1330	Paramus (201)599-0080	Brick (732)920-3600
--------------------------	-----------------------------	--------------------------	------------------------

1-800-BE-CAPRI
www.CapriInstitute.com

Scholarships for our 1200 Hour Cosmetology and 600 Hour Esthetician Programs may not be combined with any other scholarship and will be awarded upon completion of the course within specified graduation date.

Clases de cosmetología en español en Kenilworth & Clifton

Get Better Here

UNION COUNTY ORTHOPAEDIC GROUP

Our doctors know all 206 bones in your body—tendons and ligaments, too. Our specialty: hand, arm, shoulder, foot, ankle, knee, hip, back and any pain in the neck. Rebuild your life. Get leading edge care close to home.

210 W. St. Georges Avenue
Linden, NJ 07036
(908) 486-1111

1139 Raritan Road
Clark, NJ 07066
(732) 388-1761

John Kline MD
Walter Pedowitz MD
Richard Mackessy MD
David Rojer MD
Morton Farber MD
Christopher R. Ropik MD
Nathaniel Sustain MD
Naomi Betesh DO

EYES ON YOU

FAMILY EYECARE AND OPTICAL

1535 Irving Street, Rahway, NJ
732-388-3900
www.primaryecp.com/eyesonyou

- Comprehensive Eye Examinations
- Glaucoma Testing and Cataract Evaluations
- Treatment and Management of Ocular Disease
- Variety of Eyewear including Designer Brands
- Contact Lens Examinations
- Variety of Contact lenses
- Eyeglass Repairs

Dr. M. Williams
Optometric Physician
Lic#: 27OA00565300/27OM00062400

INSURANCES: Please call if you do not see your insurance plan listed.

• Eyemed	• Medicare	• Optum Health Vision (formerly Spectera).
• VSP	• Medicaid	• United Health Care
• Aetna	• NVA	• Blue Cross Blue Shield of NJ
• Avesis	• Block Vision	• Vision Benefits of America
• Qualcare	• Superior Vision	• Empire Blue Cross Blue Shield and many more.
• Davis Vision	• Oxford	

Our Office Hours:
 Mon: 10am to 6pm
 Tues: 10am to 6pm
 Wed: Closed
 Thur: 10am to 6pm
 Fri: 10am to 6pm
 Sat: 9am to 2pm
 Sun: Closed
 Late appointments are available by request.

HIGH SCHOOL DONATES \$2000 AT RESTORE THE SHORE / SHORES UNITED RELIEF BENEFIT

KCoC • Page 9 • February 2013

Submitted by: Mr. David Novak – DBM/HS Publicity Chairperson

On January 26, 2013 a luncheon was held at Martell's Tiki Bar in Point Pleasant Beach, NJ to benefit the Restore the Shore (RTS)/Shores United Relief Foundation (SURF). At this luncheon, Danielle Wilkinson, David Brearley High School Graphic Arts teacher, presented Ryan Kurek with a \$2,000 donation check. Ryan Kurek is the co-founder of RTS/SURF. The \$2,000 was raised by the students of the David Brearley High School Graphic Arts and Business classes. These classes designed a RTS graphic logo and had it printed onto long and short sleeved T-shirts. These classes then sold the T-shirts to friends, family, and peers.

The first batch of 100 T-shirts sold out in less than a week. A second batch of 130 T-shirts were then ordered. These t-shirts are still available, while supplies last, and can be ordered at:

RestoreTheShoreShirts@kenilworthschools.com.

Long sleeve T-shirts are \$20.00 each. Short sleeve T-shirts are \$15.00 each. Please specify size. All proceeds will benefit Restore the Shore /Shores United Relief Foundation (SURF).

Mrs. Danielle Wilkinson and Mrs. Cheryl Kress, both very dedicated David Brearley High School faculty members, coordinated the T-shirt fundraiser. The participation in this fundraiser is another example of David Brearley's students and faculty reaching out to help others in the community and the country.

(above, l-r) Ryan Kurek and Danielle Wilkinson with \$2000 check, Ryan Kurek – Brian Luciani – Danielle Wilkinson – Steve Shohfi, The Wilkinson boys enjoying the benefit luncheon.



(above, l-r) photo 1 Ryan Kurek - Brian Luciani - Danielle Wilkinson - Steve Shohfi.



ANOTHER SUCCESSFUL BREARLEY BLOOD DRIVE

Submitted by: Mr. David Novak

On December 20, 2012, the David Brearley Middle and High School held their annual winter blood drive to benefit New Jersey Blood Services, a Division of New York Blood Center. This drive was another huge success.

There were 91 potential donors presented and only 9 were deferred. There were a total of 82 donors who actually had their blood drawn. Sixty-two (62) donated whole blood and twenty (20) donated on the ALYX machine.

The ALYX machine donors each counted as two pints of whole blood. Therefore, the 2012 Brearley Winter Blood Drive collected a total 102 blood products. There were 226 lives potentially helped by this blood drive.

This year's winter blood drive was initiated and coordinated by Brearley students: Anthony Cordero, Raquel DaCosta, Anthony Rice, and Sydnie Rodrigues. Their faculty advisor was Ms. Melissa Condo, school nurse.


To learn how to conduct a successful blood drive, the four Brearley student committee volunteers attended the New Jersey Blood Services High School Summit at Johnson and Johnson world headquarters. These same four students organized a whole school assembly in November to educate and inform their high school peers and faculty of the urgent need for blood donations. The whole school assembly included presentations by Mrs. Marisa Zsamba and Mr. David Novak, both David Brearley faculty members, and all four of the student coordinators. The four student coordinators then ran the December 2012 Blood Drive at David Brearley.

Congratulations and special thanks go out to all students who attempted to and/or actually donated the gift of life in the form of blood or donated their time to process or assist the donors and NJ Blood Services workers.

These students are proof of the spirit of volunteerism and truly giving back to the community that is present at David Brearley Middle/High School.



(above, l-r) Three Blood Drive Student Committee volunteers Raquel DaCosta, Anthony Cordero, and Sydnie Rodrigues.



molly maguire's
IRISH PUB & RESTAURANT

**1085 central avenue,
clark, nj 07066**
732-388-6511

Monday through Friday

Join us for Our Sunset Specials

From 3pm to 6pm. All inclusive.
Choice of Soup or Salad. Choice of Entrée,
Coffee or Tea and Dessert
\$15.99 per person

Monday through Thursday

½ Price ½ Price ½ Price
**Buy One Burger and get a
Second Burger 1/2 Price!**

Includes French Fries. Toppings additional.
18% gratuity will be added on the full price of the bill before promotion.

Sunday's Prime Rib Special

Includes
Choice of Soup or Salad
Prime Rib with Potato and Vegetable
Coffee or Tea and Dessert
Queen Cut: \$16.99
King Cut: \$19.99



La Campagnola

"an Italian Restaurant"
**520 South 31st Street
Kenilworth, NJ
908.241.9200**

Follow us on Face book:
Facebook.com/lacampagnolanj

**Daily specials • Full service bar
Catering on and off premises
Private Parking Lot
Private partyroom for your special holiday.**
www.letseat.at/lacampagnola

Chef Roberto* is back in the kitchen
pairing up with Angelo making a new twist
to the menu with Roberto's famous dishes
(seafood panella, purple chicken)
***previously of Roberto's**

NEW HOURS: SUN - 2:00-9:00
TUE - THURS 11:30-10:00
FRI - 11:30-11:00, SAT - 4:00-11:00

**IT'S NOT TOO LATE TO
BOOK VALENTINES, CALL
FOR OUR SPECIAL MENU.**

KENILWORTH FREE PUBLIC LIBRARY

Located at 548 Boulevard. Library website is www.kenilworthlibrary.org.

Registration for programs may be done in person at the library or by calling 908 276-2451.

The library's regular schedule of operation: Mon, Tues and Thurs: 10:00 AM to 9:00 PM,

Wed: 10:00 AM to 6:00 PM, Fri: 10:00 AM to 5:00 PM, Sat: 10:00 AM to 2:00 PM.

The Kenilworth Public Library is handicapped accessible.

facebook.com/kenilworthworth.public.library

BOOK GROUP TO DISCUSS CHANDLER'S THE BIG SLEEP

The book group of the Kenilworth Public Library will meet to discuss Raymond Chandler's crime fiction classic, *The Big Sleep*, at 7:15 PM on Tuesday, March 12, in the library's activity room. The first of Chandler's work to feature detective Philip Marlowe, *The Big Sleep* is familiar to many as the basis for the classic 1946 movie of the same name that starred Humphrey Bogart and Lauren Bacall. As a testament to the novel's enduring popularity and significance to American culture, *The Big Sleep* was included in Time's 2005 list of the 100 best novels in the English language published between 1923 and 2005.

Participation in the book group is free and open to all members of the general public ages 18 and up, including people who reside in

communities other than Kenilworth. Previous experience with a book group is not required and new members are always welcome. Copies of *The Big Sleep* will be available for check out at the Kenilworth Library's circulation desk and residents from other communities are encouraged to check for ways they may be eligible for borrowing privileges at the Kenilworth Public Library. Because space is limited, preregistration is requested and can be done in person at the library or by calling 908 276-2451 during regular library hours.

LIBRARY NOW ON FACEBOOK

Check us out at

facebook.com/Kenilworth.Public.Library

HER BROTHER, HIS SISTER JOINS BELLA GENTE

Paul, Ginny & Kazia formerly of Her Brother His Sister Salon of Kenilworth have joined the Bella Gente crew located at 508 Boulevard.

(right, l-r) Grace of Bella Gente welcomes Ginny, Paul, Kazia formerly of Her Brother His Sister, with partner Erica, and former Bella owner Fred.



(right) Austin McInerney of Kenilworth sports his new Mohawk he had done at Bella Gente's.

BELLA GENTE

A Place for Hair

Bella Gente announces the addition of Paul, Kazia & Ginny formerly of Her Brother His Sister Salon



908 272-9741

508 Boulevard • Kenilworth, NJ



WANTED:

ALL CARS & TRUCKS: JUNK OR NOT

Late Model Foreign & American New & Used Auto & Truck Parts:

- Motors • Transmission
- Auto Glass • Computers
- Tail Lights • Doors
- Fenders • AC Compressors

Junk Tow Away

**Fast Pick Up
24 HR Service**

732-381-2646

Night Towing 732-496-1633

1 Dudley Ct. & Rt. 1 South, Avenel, NJ

Across from Sansone Auto Mall.

10% OFF ALL AC COMPRESSORS

With this ad. Expires 3/11/12.

FRIENDS OF LIBRARY TO LAUNCH MEMBERSHIP DRIVE

The Friends of the Kenilworth Public Library has begun its 2013 membership drive and is looking for new members. Funds raised through the membership drive help support the programs and activities of the library, including the purchase of new books, movies and equipment. An individual membership costs as little as \$5.00, a family membership is \$10.00, patron level is \$15.00, sponsor is \$25.00 and "best friend" is \$50.00. The Friends meet in the library's activity room at 7:00 PM on the third Tuesday of each month except July, August and December. Meeting dates for 2013 are February 19, March 19, April 16, May 21, June 18, September 17, October 15, and November 19. Applications for membership are available at the Kenilworth Public Library

CELEBRATE IRISH CULTURE WITH HARP AND SONG

Start celebrating Saint Patrick's Day early at the Kenilworth Public Library on Friday, March 15, at 7:00 PM with a program of popular Irish music for harp and voice by Kenilworth resident Betsy Mackenzie-Stubbs. Joining her for some of the vocals will be her husband, Kerry Stubbs, also a professional vocalist.

Mackenzie-Stubbs is well known in Union County and beyond as an experienced voice teacher, music educator and active performer of oratorio, art song and opera. She holds a Bachelor of Music degree in voice performance from Westminister College, New Wilmington, Pennsylvania and a master of Music degree, with distinction, in vocal pedagogy/performance from Westminister Choir College in Princeton, New Jersey.

This program is free and open to all members of the general public. However, because space is limited, preregistration is required and preference will be given to Kenilworth residents. If space permits, registration will open to residents of communities other than Kenilworth on Wednesday, March 13.



CERTIFIED PUBLIC ACCOUNTANTS & CONSULTANTS

Providing Financial Security to Generations of Businesses

Accounting & Auditing Services
Tax Planning & Preparation
Estate & Trust Planning
Business Succession Planning
Sports & Entertainment Accounting
Forensic & Investigative Accounting

20 Commerce Drive, Suite 301
Cranford, NJ 07016
P: (908) 272-6200
F: (908) 272-2416

WWW.FMRTL.COM





Without question, Union County has yet to see such a state-of-the-art, patient-centered FOUR STAR Rated facility specializing in Sub Acute Rehabilitative Care and Long Term Nursing Care. Alaris Health at Riverton boasts a broad array of services in our Sub Acute and Long Term units such as:

- Speech, Physical and Occupational Therapy
- Specialized Orthopedic Rehab
- CHF Program
- Wound Care
- Dementia & Alzheimer Care
- Stroke Program
- IV Therapy
- Tracheostomy Care
- Respite Stays
- Hospice Care

Be our guest and come for a tour to see first hand how Alaris Health At Riverton is leading the way for how care is delivered in Union County!

OPEN HOUSE
February 28th
from 2pm to 6pm
Door prizes for all attendees.
RSVP to Robert at 732 499 7927.
Refreshments served.

(732) 499-7927

1777 Lawrence Street • Rahway, NJ 07065

LOCATION, LOCATION, LOCATION



It's not just a home, it's a *lifestyle.*

**NEW
CONSTRUCTION
CONDOS FOR SALE
STARTING AT
\$179,900**

OUTSTANDING AMENITIES

- Two state of the art elevators
- Fully equipped exercise room
- Security Cameras
- Spacious event room
- Storage area for each home
- On-site parking
- Noise reduction
- High ceilings throughout
- Gorgeous hardwood floors
- Central A/C and heat
- Electric water heater
- Phones and cable outlets
- Washer and dryer hookup
- Stainless steel appliances



**WALK IN OR MAKE
AN APPOINTMENT**

Office Hours:

Friday thru Monday: 11am to 5pm

Tuesday: 2pm to 8pm

Closed Wednesday
and Thursday
but available
for appointments



Within two blocks

of New Jersey Transit North Jersey Coast Line, approximately a 35 minute train ride to the New York City Penn Station



Easily accessible

to most main NJ Highways, The Parkway, Turnpike & Rt. 9. Bus transportation throughout the area.



Local to

cafes, boutiques, area markets all for your convenience.



The
Parkline
Condominium

1-855-296-4900 | parklinecondos.com

102-104 E. Elizabeth Avenue, Linden, New Jersey