

BUSINESS + LIFE KENILWORTH

KENILWORTH CHAMBER OF COMMERCE



Issue #82

October 2014

The Kenilworth Chamber of Commerce is an affiliate of the Gateway Regional Chamber of Commerce.

**KENILWORTH
CHAMBER
MEET THE MAYOR
TUES, OCTOBER 8
8:30 AM**

**KENILWORTH LIBRARY
548 BOULEVARD,
KENILWORTH, NJ
Hosted by Michael Maziekien,
Library Director**

**CHAMBER OF
COMMERCE
LOCAL & COUNTY
AFFAIRS COMMITTEE
FRIDAY
OCTOBER 10
8:30 AM
COURT ROOM
567 BOULEVARD,
KENILWORTH, NJ
Hosted By Mayor Scott Klinder**

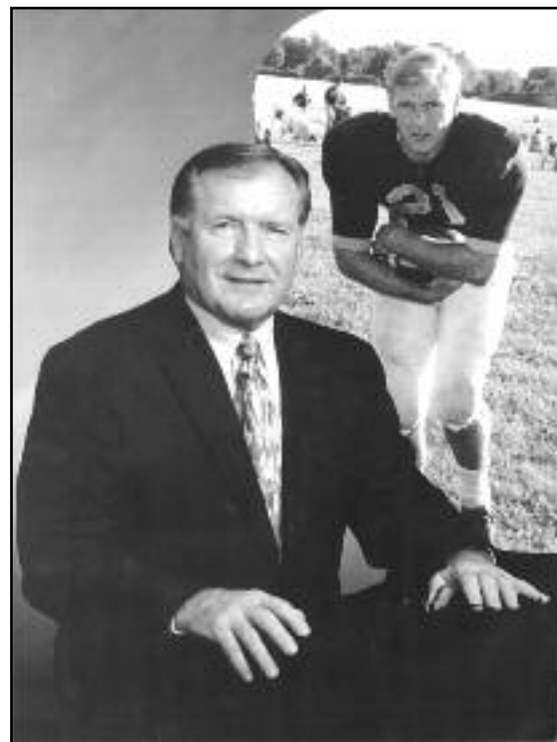
FORMER FOOTBALL COACH BOB TAYLOR TO BE HONORED

Former David Brearley High School Head Football Coach Bob Taylor will be honored by the Kenilworth School District at halftime of the Brearley-Roselle football game on Friday evening, October 24th. Game time is 7:00 PM. Taylor will be enshrined onto the school district's "Wall of Honor" for his many years of dedication to the students, athletes, and citizens of Kenilworth.

Bob Taylor was the legendary Head Football Coach of the Brearley Bears for nineteen seasons, guiding them to four State Sectional Championships and numerous Conference titles as well. Bob was also viewed as an outstanding educator, both as a teacher and as an active twelve year member of the Kenilworth Board of Education.

Bob further served the community of Kenilworth as its longtime Director of Recreation. In addition, he was a founding member of the Labarca College Day, which provided recruitment opportunities for countless New Jersey football players. He was also the driving force behind the Labarca Coaches Clinic which was held at Brearley for many years. The Labarca Clinic would feature the nation's most prominent college football coaches on a yearly basis.

There will be a reception for all former players and coaches at the Kenilworth Veteran's Center immediately following the game. Anyone interested in attending should contact Lenore Jeans in the David Brearley Athletic Office by calling 908-931-9696 extension 327.



PRST STD-A
US POSTAGE
PAID
Permit #1081
Newark, NJ

ECRWSS



11th Annual Taste of Kenilworth

Tuesday, Oct. 28, 2014 • 6 pm - 8 pm

Proceeds of the event fund the Chamber of Commerce Scholarship Prize Program.

- Tickets: \$25 w/ pre-paid registratin \$35 at door
- \$20 Senior Special w/ pre-paid registration

To purchase tickets call: Kate Conroy at 908-352-0900

Kenilworth Chamber of Commerce office

Fax: 908-352-0865 Fax

Email us at info@gatewaychamber.com

P.O. Box 300 • Elizabeth, NJ 07207-0300

Hosted by



MERCK

**PARTICIPATING RESTAURANTS
(SO FAR!)**

- 10th Street Live
- Bella Palermo
- Blackthorn Irish Pub
- La Griglia Seafood Grill & Bar
- Rinaldi's Italian Bistro
- Star of India
- The Kenilworth
- Umberto's Clam Bar & Continental Restaurant

*****ECRWSSDDM*****

**POSTAL CUSTOMER
KENILWORTH, NJ 07033**



THIS SPACE IS NOW AVAILABLE FOR ADVERTISING!!!

Demand for advertising in this space has been high. It is now available on a first come first served basis. Call Tina today to reserve the space in this or other Renna Media publications.

**Each month this newspaper is mailed
to every home and business in Kenilworth**

Reserve space in the next issue. Call Tina today at 908-418-5586

or email info@rennamedia.com

BUSINESS + LIFE KENILWORTH

KCoC • Page 2 • October 2014

Kenilworth Business Life is published by Renna Media.

Over three thousand newspapers are printed monthly and distributed free to every home and business in Kenilworth.

Although great care has been taken to ensure the information contained within is accurate, Renna Media assumes no liability for errors or omissions. Renna Media welcomes the comments and concerns of its readers put into writing and sent to:

Tina & Joe Renna, Publishers
202 Walnut Ave., Cranford, NJ 07016
(908) 418-5586

Fax: (908) 709-9209

E-mail: info@rennamedia.com

© 2014 Contents of this newsletter cannot be reproduced without written consent from Renna Media.



P.O. Box 300 • Elizabeth, NJ 07207-0300
908-352-0900 • 908-352-0865 Fax
Email us at info@gatewaychamber.com

SEND US YOUR NEWS

Did you or someone you know accomplish something amazing? We are interested in hearing about your latest achievement (accomplishment, honor, award, etc.). Do you have an event that you need help publicizing? Then send Cranford Monthly your news!

Call: 908-418-5586

Fax: 908-709-9209

Email: info@rennamedia.com

Advertising in this newspaper

**3,500 papers
are printed
monthly
and mailed
to every
household
and business
in Kenilworth.**



**Reserve space in the next issue.
Call Tina today at 908-418-5586
or email info@rennamedia.com**

KENILWORTH SCHOOLS...OFF TO A GREAT START!

Submitted by Tiffany Moutis, Assistant Superintendent

September is always such an exciting time of year, as schools of all sizes and grade levels open their doors for the beginning of the new school year. The focus is always on enhancing student learning. We have a year full of wonderful and exciting things planned for the Kenilworth students and parents!

We have five main focuses this school year:

- **Engaging our students in learning:** What does it mean for students to be engaged in learning? It does not mean having students complete worksheets, answer basic questions, or take notes of a lecture. The word engage means to require use of/occupy, to attract and hold attention, and to involve. When students are engaged, they are participating and working in a way that is full of energy and motion, and they are involved and interested in what is being learned.
- **Professional Development:** Professional development is the learning that occurs for

teachers so they can create environments for all our students to achieve high standards. We believe that effective professional development is sustained and consistent throughout the school year. We have many wonderful workshops planned for our staff!

- **Community Involvement:** Parent involvement not only positively affects student achievement it contributes to higher quality education and better performance in school. There are many events scheduled this school year to inform the community of the most up to day information regarding assessments and curriculum topics.
- **Academic Rigor:** Kindergarten through college students need to be pushed to move beyond where they were when they entered the classroom. It is the responsibility of the school district to make learning relevant and to encourage curiosity amongst our students.

We will continue on evaluating what we have and determining what we can do to improve.

I look forward to a fantastic school year!

Meeting every Thursday night starting at 8:00 pm

**KENILWORTH COMMUNITY CENTER AND RECREATION BUILDING
575 Boulevard in Kenilworth, NJ at corner of 24th Street**

Visitors are always welcome, beginner to master. Membership is not required to play.



www.kenilworthchessclub.org

Missing teeth? Make your smile complete!

A missing tooth is no laughing matter. We make getting implants easy and inexpensive. From a single tooth to several teeth, a complete smile is just a phone call away.

We work with all dental insurance plans.

*Se habla
español*

908-276-4116

Arthur F Haliczzer, DDS

108 N. Union Avenue • Cranford, NJ 07016

Member of Cranford Business Alliance.org

www.arthurhaliczzerdds.com

SPECIAL OFFERS FOR NEW PATIENTS

- **FREE Implant Consultation**
- **Dental Implant: \$1,150** (reg. price \$2,150)
When abutment and crown are done at the same time.
- **Exam & Oral Cancer Screening**
- **Digital X-Ray, Cleaning: \$99***

Mention this ad.

**Unless gum disease is present.*





It's Official!
Voted by you,
the parents!



We are so proud of Becky Lenox, our Miss Star of Hope 2013 & 2014 Champion for Dancers Care, who has organized this amazing fundraiser!



Dancers Care
Foundation
We All Need Someone

Fundraiser on December 12th 2014

7:00pm \$10 per ticket

Cranford High School

Featuring Student Choreography

For Tickets call 908-272-2522

Registration Still Open!

NEW-- Beginner Middle School/High School classes

Ballet * Jazz * Tap * Pointe * Lyrical * Acro * Musical Theater

Hip-Hop * Creative Dance * Combo Classes

Competition Team * Music Together * Adult Tap * Yoga

Beginner to Advanced

Ages 3 & up

Register today at BeyondDanceNJ.com

Beyond Dance 123 N. Union Ave, Cranford 908-272-2522

HOW TO BECOME FINANCIALLY INDEPENDENT

A free seminar for young adults (and those who love them) to explain the key steps to becoming financially independent will be held at the Atlantic Federal Credit Union, located across from the A&P at 37 Market Street, on Saturday, October 25th, from 10 am to 11:30 am. Light refreshments will be served.

Topics to be discussed include strategies for paying off student loans, finding a job, renting an apartment, establishing credit, buying a home, saving for the future and financing a car.

Call Atlantic Federal at 908-245-1750, ext. 7512 or e-mail cgarrett@atlfedcu.com to reserve a seat.

As a not-for-profit financial institution for more than 75 years, Atlantic Federal offers higher rates on savings, lower rates on loans and fewer fees. For information about the Credit Union's services visit www.atlfedcu.com.



Kathleen Gwaldis

27 Years of Experience

cell: (908) 400-8409

www.kathleengwaldis.com

Kenilworth Real Estate Specialist

FREE MARKET ANALYSIS



Realtor Associate - Weichert President's Club
185 Elm Street, Westfield NJ, 07090
Office: (908) 654-6560, x 162

REGISTRATION FOR THE FALL READING PROGRAM IS UNDERWAY.

The reading club

concludes on Friday, November 14.

Mommy, Daddy & Me

parent and child home reading program for ages 2 to 5.

I Can Read

a reading program for children who are just starting to read on their own from ages 6 to 8.

Club Readsalot

a reading program for children ages 9 to 12.

Registration is required for:

Lap Sit

for ages 0 to 23 months

Tuesdays from 10:30 to 10:50 am:

October 7, 14, 21 & 28 and November 4 & 11.

Toddler Time

October 1, 8, 15, 22 & 29 and November 5 & 12.

for 2 year olds from 10:30 to 10:50 am:

PJ Story Time

October 2, 9, 16, 23 & 30 and November 6 & 13.

for children ages - 3 6:30 to 7:00 pm:

Children are invited to wear their pajamas to this program, and bring along a stuffed animal, too.

PJ Story Time special events include:

Mother Goose Tales

October 16.

Children will enjoy interactive stories, rhymes and puppets during this special story time presented by Carolyn Geeding and Mary Ann Malloy.

Halloween Stories and Craft

October 30. Children will listen to Halloween stories and make a Halloween craft to take home and display.

Children are invited to wear their Halloween costumes.

View The Night Sky

November 6

View the moon, stars and more through a telescope.

Thanksgiving Stories and Craft

November 14

Thanksgiving stories and make a Thanksgiving craft.

Crazy 8's Math Club

Oct. 2, 9, 16 & 23 from 3:30 – 4:15pm.

4 weeks of fun for children ages 4 – 6 years old from the creators of Bedtime Math. Kenilworth residents may begin to register on September 25 beginning at 10:00am. Out of town residents may begin to register on September 30 beginning at 10:00pm.

Bingo for Young Children

October 3 & 17 and November 14.

Fridays from 3:30 to 4:00pm for children ages 3 and up: Parents must remain in the library during the program.

Bingo for Children Who Can Read

October 10; and November 7

Fridays from 3:30 to 4:00pm in the Activity Room: .

Parents do not participate in this program.

Special Events:

Registration is required for all special events.

Children ages 4 & up, residents may register one week prior to each event beginning at 10:00am.

Lego At The Library

Oct 1, 14, 15, 28 & 29 and Nov. 11 & 12.
from 3:30 – 4:30pm.

Learning About Bees

Thursday, October 9 from 6:30 – 7:15pm.

View live bees

learn how bees locate food, and make a beeswax candlee.

Learning About Bats

Saturday, Oct. 18 from 11:00 – 11:45am.

Children will learn about and view up close live bats.

View The Night Sky

Thursday, Nov. 6 from 6:30 – 7:15pm

Children will have an opportunity to view the moon, stars and more through a telescope.

A Halloween Celebration

Friday, Oct. 24 from 7:00 to 7:45pm.

Children are invited to attend this program wearing their Halloween costumes.

NO REGISTRATION – SPECIAL EVENTS:

Open House Lego Planet

Friday, November 7 from 11:00am – 2:00pm.

Children ages 4 – 12 years old are invited to visit.



Take the Wheel with an Auto Loan From Us!

NEW • USED • REFI

AS LOW AS **1.99%** APR*

Come to Atlantic Federal for your new or used Vehicle Loan. As a credit union, our rates are lower and our terms are more flexible.

*APR = Annual Percentage Rate. Rates and percentage financing shown offered to Premier Members meeting selected credit criteria for up to a 3-year term on new vehicles. Other rates and terms available based on Member Merits status and credit worthiness criteria. Rates in effect Oct. 1, 2014 and are subject to change without notice.

Call 1-800-222-1329, option 3, today.

1-800-222-1329 / www.atlfedcu.com



Kenilworth

37 Market Street
(across from A&P)

Newark

550 Broad Street
(corner of Broad & Lombardy)

Elizabeth

210 Williamson Street
(by Trinitas Hospital)



KENILWORTH FREE PUBLIC LIBRARY

KCoC • Page 5 • October 2014

Located at 548 Boulevard. Library website is www.kenilworthlibrary.org.

Registration for programs may be done in person at the library or by calling 908 276-2451.

The library's regular schedule of operation: Mon, Tues and Thurs: 10:00 AM to 9:00 PM,

Wed: 10:00 AM to 6:00 PM, Fri: 10:00 AM to 5:00 PM, Sat: 10:00 AM to 2:00 PM.

The Kenilworth Public Library is handicapped accessible.

facebook.com/kenilworthworth.public.library

LIBRARY ADDS NEW EARLY LITERACY STATION

Kenilworth Public Library announces the acquisition of a new Early Literacy Station (ELS), a comprehensive, educational solution loaded with over 70 educational software programs for kids ages 2–8. The Early Literacy Station offers children a safe, standalone computer not connected to the Internet that is age-appropriate, engaging, and academically relevant for children. It is designed to support school readiness and early education while making learning exciting and engaging.

Children ages 2 - 10 are invited to visit the library located at 548 Boulevard to explore the many activities available on the new AWE computer.

The early learning applications on the Early Literacy Station span every curriculum area: reading, language arts, math, science, STEM, social studies, writing, graphic arts, typing, music, and more. The content is correlated to Common Core standards.

The Early Literacy Station has an imaginative interface that encourages exploration by readers and pre-readers alike. "The Early Literacy Station is an invaluable resource for our toddlers to 5th grade students," says Robin Koerner, Coordinator of Children's Services. "The kids are having fun, and many times they don't know

they are learning!"

AWE's Early Literacy Station, the company's flagship product, is found in over 40% of the public libraries across the United States as well as in many communities in Canada and abroad. AWE is a provider of digital learning solutions for young children that inspire a lifetime of learning. Funding for this AWE computer has been made possible by The Pat Malfetti Memorial Fund.



(above) Tommy Inglima, age 8 of Kenilworth explores a program on the new AWE Early Literacy Station located in the Kenilworth Public Library's Children's Department.

RECREATION HALLOWEEN EVENT

On Saturday, October 25th, there will be a Halloween event held at DiMario Park located on Michigan Avenue from 5pm to 9pm. The free event for Kenilworth residents is sponsored by the Kenilworth Recreation department and will replace the Halloween parade.

Activities will include adult and children's costume contests, DJ, snacks, haunted house, zombie crawl, make-up artists, and more. No registration is required.

GIRL SCOUT JUNIOR TROOP 40897 AT THE STREET FAIR

Kenilworth Girl Scout Junior Troop 40897 is sponsoring a Pet Adoption Awareness booth at the Kenilworth Street Fair as a component of earning their Bronze Award. The Bronze Award is the highest award a Girl Scout Junior can earn. The troop is asking the community for donations of canned kitten food, baby food, cat toys, cat litter, dry dog food, ground canned dog food, nylon slip leads, hard dog toys or Nylabone (no raw hides please), gently used towels, blankets, quilts or sheets, and soft treats (no hard cookies please). Donations will be given to the Friends of Union Twp. Animal Shelter and to Saint Hubert's. The Kenilworth Street Fair is on Sunday, October 26th from 10am – 4pm along the Boulevard.

KENILWORTH STREET FAIR
FUN FOR THE ENTIRE FAMILY!

DELICIOUS FOOD
200 EXHIBITORS
LIVE CONCERT
SPONSOR GIVE AWAYS

kids traveling shindig
kiddie & rides
face painters
clowns petting zoo

**SUNDAY
OCT. 26**

**rain or shine
10AM-4PM**

**held along the
BOULEVARD**

**201.998.1144
Jcpromotions.info**

RENNAMEDIA.COM



UNION COUNTY LOCALSOURCE

PARENTGUIDE

Star-Ledger nj

NEW JERSEY 101.5 FM RADIO

Kids Guide

TRIPS TO MOHEGAN SUN, ROCKVALE SHOPPING OUTLETS, NATIONAL CHRISTMAS CENTER/SHADY MAPLE SMORGASBORD TO BENEFIT KENILWORTH'S NITSCHKE HOUSE

The Kenilworth Historical Society will host bus trips to Mohegan Sun Casino (Uncasville, Conn.) on Sat., Oct. 25, to the Rockvale shopping outlets (Lancaster, Pa.) on Thurs., Nov. 6, and to the National Christmas Center, Shady Maple Smorgasbord and Kitchen Kettle Village (Lancaster County, Pa.) on Dec. 6.

The Oct. 25 Mohegan Sun Casino trip will depart Kenilworth (St. Theresa's School parking lot) at 8 a.m. and return to Kenilworth at approximately 9 p.m. Cost of \$52 includes motor coach transportation, an approximate six-hour visit to the casino, which additionally houses a wide range of distinctive shops and popular restaurants, a \$10 coupon for free bets and a \$15 coupon for food.

The Nov. 6 Rockvale shopping trip will depart Kenilworth (S. 21st Street Municipal Parking Lot) at 8 a.m. and return at approximately 8 p.m. Cost of \$43 includes

motor coach transportation, about 6 hours of shopping time, a discount coupon book and a shopping outlet map.

Rockvale features more than 100 outlet stores offering up to 75 percent off retail prices on popular brand names – plus additional discounts daily. There is no sales tax on clothing and shoes. Among the diverse range of outlet stores at Rockvale are QVC, Vanity Fair, Bass, Dressbarn, Jones New York, Kasper, Levi's, Jockey, Izod, Lenox, Bose, Pottery Barn, Orvis, Carter's, Disney, Toys R Us Express, Christmas Tree Hill – and many more! Site amenities include such favorite eateries as Olive Garden, Ruby Tuesday, Cracker Barrel, Qdoba Mexican Grill and Bob Evans, plus trolley/shuttle service.

The Dec. 6 National Christmas Center and Shady Maple trip will depart Kenilworth (St. Theresa's School parking lot) at 7:30 a.m. and return at approximately 7 p.m. Cost of \$80 includes motor coach transportation; admission to the National Christmas Center, which features 15 main galleries of life-sized exhibits celebrating the magic and memories, history and traditions of Christmas, plus a 1950s replica Woolworth 5&10 store; and a sumptuous all-you-can-eat feast at the Shady Maple Smorgasbord (Lancaster County's largest smorgasbord), which includes 200 feet of delicious buffets with more than 100 items to

choose from. Time will be allowed to visit the spectacular gift shops at each destination. A stop will also be made at Kitchen Kettle Village (weather permitting) featuring quaint shops, carolers, brass bands and other seasonal festivities.

There will be complimentary door prizes on all the bus trips. For further information and reservations, please call 908-709-0391 or 908-709-0434. As space is limited on these popular outings, it is suggested that reservations be made early to ensure availability. Gift certificates for the trips are available for purchase.

Proceeds will benefit the Kenilworth Historical Society's Oswald J. Nitschke House museum restoration/preservation project.

Other upcoming Kenilworth Historical Society events include "Four Centuries in a Weekend" at the Nitschke House (Oct. 18-19); Boscov's (Woodbridge) "Friends Helping Friends" event (Oct. 21); and a "Rockin' BBQ with The King" (Elvis) (Jan. 10). For further information, please call 908-709-0434 or 908-709-0391.

The Kenilworth Historical Society is an independent, volunteer-based, non-profit, tax-exempt, 501(c)(3) organization dedicated to the research, preservation and interpretation of the Oswald J. Nitschke House, local history and culture.



KNEE PAIN RELIEF

If You Suffer From Knee Pain
Surgery Is No Longer Your Only Option!

Call For Your Risk-Free Consultation Today!

- Safe, natural and effective relief from knee osteoarthritis. No drugs, No surgery!
- FDA Approved Non-Surgical Alternative Now Available Locally
- Covered by most insurance including Medicare



Dr. Scot Paris, MD

Here's what our patients have to say...

"I'm dancing without pain. I can move with no problem whatsoever. I can go up and down steps with no pain."
– Patricia G.

"Over 85% relief for the first time in 15 years, suffering with knee pain. My life is getting back to normal."
– Perry O.

"After only four visits, I have absolutely no pain! The staff is 'top-notch.'"
– Quenton L.

njpainreliefcenter.com



732-827-0800
1043 Raritan Road • Clark, NJ 07066



PREMIER
OSTEOARTHRITIS
CENTERS OF NEW JERSEY

RE/MAX HOSTS COMMUNITY EVENT

RE/MAX Vision of Kenilworth hosted its first annual appreciation day on September 20th. The community was invited to enjoy a day of fun, at Harding School field. The event featured balloon rides, face painting, games and toys. A Barbecue and refreshments were served throughout the

day. RE/MAX wanted to do something to show its appreciation to the Kenilworth community. The highlight of the day was the opportunity for those in attendance to take a ride in a hot air balloon. RE/MAX plans to make this an annual event.



FRESH AND FRIED SEAFOOD
Serving New Jersey for Over 30 Years

Hours of Operation:
Mon. - Wen. - Sat: 8:30 a.m.-6:30 p.m.
Thur. - Fri.: 8:30 a.m.-7:00 p.m.
Closed Sunday

Like us on Facebook for exclusive deals
(908) 241-5990

111 W. 2nd Ave. • Roselle, NJ
www.roselleseafoodmarket.com

Choose the best route for you.



Only \$500 minimum to open and earn interest!



myGSCB.com • (877) 786-6560
Garden State Community Bank

A Division of New York Community Bank • Member FDIC



Annual Percentage Yields (APYs) are accurate as of date of publication and are subject to change without notice. The minimum balance to earn the stated APY for the 12 month or 24 month CD is \$500. The minimum balance to open the account for the 12 month or 24 month CD is \$500. The interest rate remains fixed until maturity. A penalty may be imposed for withdrawals before maturity. Fees could reduce earnings. The bank is not responsible for typographical errors. Offer may be withdrawn at the discretion of the bank at any time.

NJ CHARGERS 10U TAKE SECOND PLACE IN DISNEY TOURNAMENT

The NJ Chargers 10U team from Kenilworth, New Jersey placed second at the Disney Turn-Back-the-Clock tournament held Labor Day weekend at the ESPN Wide World of Sports Complex in Orlando. In the extreme Florida heat, the boys faced teams from Puerto Rico, St. Thomas, Florida and New York. The competition was fierce, but the Chargers played their hearts out until the very end bringing home a silver medal for placing second.

(right, l-r) Players: Will Gallagher,
Dominick Carlucci,
Gerald Bissell,
Joe DiGrado,
Jayden Hylton,
Matt Mendoza,
Andrew Fernandez,
Stefon Johnson,
Andy Troczynski
and Jacob Charnow.

Coaches: Rick Carlucci, Joe DiGrado,
Will Gallagher and Andy Troczynski



BACK TO SCHOOL



**Cosmetology
Barbering
Skin Care
Nail Technology
Instructor Training**

Ask about our different programs and how they can work for you!

**CAPRI
INSTITUTE**

1-800-BE-CAPRI
www.CapriInstitute.com


Kenilworth Campus:
680 N. Michigan Ave.
Kenilworth, NJ 07033
(908)964-1330

Clifton Campus:
1595 Main Ave.
Clifton, NJ 07011
(973)772-4610


Paramus Campus:
615 Winters Ave.
Paramus, NJ 07652
(201)599-0880

Brick Campus:
268 Brick Blvd.
Brick, NJ 08723
(732)920-3600

Clases de cosmetología en español en Kenilworth & Clifton



Local. Trustworthy. Insurance.



The Insurance Centers

Donald F. LaPenna Associates, Inc.

• AUTO • HOME • RENTERS • LIFE • HEALTH • TRAVEL • TRUCK • BUSINESS • PROPERTY

(855) 467-2877
INSCTRS.com


100 Walnut Ave, Suite 503
Clark, NJ 07066

MetLife Auto & Home is a brand of Metropolitan Property and Casualty Insurance Company and its affiliates: Metropolitan Casualty Insurance Company, Metropolitan Direct Property and Casualty Insurance Company, Metropolitan General Insurance Company, Metropolitan Group Property and Casualty Insurance Company, Economy Fire & Casualty Company, Economy Indemnity Insurance Company, and Metropolitan Indemnity Insurance Company of New York. All coverages, amounts and conditions are available in most states to those who qualify. See policy for restrictions. (08/13/08) (08/13/08) (08/13/08) (08/13/08) (08/13/08) (08/13/08) (08/13/08) (08/13/08) (08/13/08) (08/13/08)

Relax. You've got the Combo Policy Package from MetLife Auto & Home.®

You've got convenience, coverage and money-saving discounts on your auto and home insurance with MetLife Auto Home's Combo Policy Package. One annual package, one bill, one effective date — plus a multi-policy discount that save you money! Call today to learn more about our Combo Policy Package.

For more information please contact your Smart Choice Representative or visit www.smartchoiceagents.com.



MetLife
MetLife Auto & Home®



Ramos Real Estate Celebrates 30 Years of Living and Selling Homes in Kenilworth!





Frank Valenti has been with Ramos Real Estate since the beginning. He speaks Spanish, Portuguese and Italian.



Jerry Ramos, Diane Ramos and Thomas Ramos



Thank You Kenilworth For Your Faith in Ramos Real Estate

We Care!

"FOUR CENTURIES IN A WEEKEND" AT NITSCHKE HOUSE

KCoC • Page 9 • October 2014

Free Living History Program to Feature a Visit from Civil Engineer James Wallace Higgins (1873-1956) and a Display of His Original Master Plan/Map (c. 1894) for the Community

Visitors to Kenilworth's newly restored historic Oswald J. Nitschke House (c. 1880) at 49 South 21 Street on October 18 and October 19 will have an opportunity to meet civil engineer James Wallace Higgins (1873-1956) (portrayed by a historical interpreter/re-enactor), who created the first Master Plan for New Orange (later renamed Kenilworth).

The overall program, which will celebrate the early development of New Orange/Kenilworth, a unique planned community, within the context

of this year's 350th anniversary of New Jersey, will be presented for the general public between the hours of 10 a.m. and 5 p.m. on October 18 and from noon to 5 p.m. on October 19, during Union County's annual historic sites tour, "Four Centuries in a Weekend." Admission is free.

During the event, visitors to the Nitschke House will be able to view the building's five period rooms, which are authentically furnished in the 1905-1934 period, as well as its exhibition center, which will feature an ever-changing

array of historical and cultural exhibits. For further information about the event and the Nitschke House, please call 908-709-0434.

Funding for certain aspects of the "Four Centuries in a Weekend" program at the Nitschke House is being provided, in part, by the Kenilworth Municipal Alliance Against Alcohol and Drug Abuse.

The Nitschke House project was recognized by the State of New Jersey with a 2008 New Jersey Historic Preservation Award and most recently was cited as one of six "success stories" statewide in the 2011-2016 New Jersey Historic Preservation Plan, "Preserving New Jersey's Heritage: A Statewide Plan."

Once the Nitschke House site is fully operational, it will feature a "living history" museum on the first floor, a cultural arts center in the basement, three rooms of exhibits on the second floor, additional heirloom gardens, and a Kenilworth Heritage Walkway featuring engraved commemorative pavers sponsored by local donors.



**Special Offer to
Kenilworth
Residents**

Your Invited!

**Tour our facility and experience why we are
the BEST VALUED CLUB in the area!***

With this ad receive:

**3-DAY
GUEST
PASS**

**RELAXING
HYDRO
MASSAGE**

**100%
NATURAL
SHAKE**

*As rated by current members. Visit club for details. Union location only.
Offer valid till 10/31/14. 18 yrs or older.

Special offer just for you and your family! Bring a friend too!



908.349.8040 • www.ClubMetroUSA.com

2343 MORRIS AVE • UNION, NJ

 **ClubMetroUnion**

 **@ClubMetroUnion**

D

**DiBella
Financial Group**

Serving your financial Needs
For Over 50 Years

- Tax Preparation
- Insurance
- Mortgages
- Purchase & Refinance Loans

Thomas DiBella
Joseph DiBella
Anthony DiBella

(908) 686-7370
515 Springfield Road
Kenilworth, NJ 07033
Fax (908) 686-7470

L&K Sedan & Taxi Service

ALL METRO AIRPORTS PIERS NYC THEATERS

Kenilworth 908-276-4444
Cranford 908-276-4441
Union/Springfield 908-688-0668
Roselle Park 908-276-6696

Toll Free 877-276-8294 (Taxi)
www.lktaxiservice.com
E-Mail: lksedan@yahoo.com
Open 24 Hours 7 Days a Week



330 Monroe Ave. Kenilworth, NJ 07033
908-276-9002

Open 7 days a week for Breakfast and Lunch.

Eat In / Take Out

Delivery, Catering & Party Room available
www.mikesplacenj.com

Homemade Soups and Daily Specials

**FREE
COFFEE
WITH ANY
BREAKFAST
PLATTER**

With coupon. Can not be combined with other offer.
Expires 11.6.14

**BUY ONE
SANDWICH
RECEIVE
SECOND AT
1/2 PRICE**

Second sandwich of equal or lesser value. With coupon. Can not be combined with other offer. Expires 11.6.14

KENILWORTH YOUTH SOFTBALL

The Kenilworth Youth Softball 10U and 18U teams played in the Parkway Invitational softball League over the summer. The 10U team was a new team and did well considering they just started. The 18U team went 10-0 for the regular season and won both their playoff games to finish the season with a 12-0 record 18U league champions 2014.

2014 KENILWORTH 18U PARKWAY INVITATIONAL SOFTBALL LEAGUE CHAMPIONS 12-0

(above, first row, l-r) Erin O'Boyle,
Shannon Ryan,
Jessica Staeger,
Katrina Jarvis,
Aniston Miller.

(second row, l-r) Melissa Ryan,
Michelle Capizzano,
Sami Smith,
Jenifer Maltese,
Sydney David.

Not pictured: Brianna Cesaro



10U TEAM

(above, first row, l-r) Coach Pat Cantalupo,
Rachel Villafranca,
Brianna Bowles,
Catherine Goger,
Sydney Phillips,
Chelsea Cantalupo,
Coach Lou Camacho.

(second row, l-r) Isabella Casolaro,
Colleen Hannon,
Brianna Montoya,
Amanda Jankiewicz,
Cassidy Charles,
Phionna Samila,
Alyson Ferrari,
Kristina Camacho.

(third row, l-r) Coach Mike Goger,
Coach Kevin Charles.

Not pictured: Danielle Cherego.



Marion & Jacobson

General Contractors

Bringing a Century of Craftsmanship Home

908-245-3030 Interior & Exterior Renovations





Slate
Copper
Stonework
Foundations
Walkways
Decks
Patios
Additions

Kitchens
Bathrooms
Roofing
Gutters
Chimneys
Windows
Doors
Siding

www.marionandjacobson.com

Licensed & Insured • Free Estimates
Emergency Repair Service Available

Kenilworth, N.J. NJ11109-1311

NEED SPACE? ACCESS CAN HELP!



908-259-1020

750 Boulevard • Kenilworth, NJ 07033

www.accessselfstorage.com

50% OFF FIRST MONTH

New customers only. Expires 11/10/14.



FREE
WiFi
AVAILABLE

HIBACHI GRILL

supreme buffet

Serving
LOBSTER or CRAB LEGS
with other Special Items
Every Holiday

For more information, please call

908-490-1600

Fax: 908-490-1601

www.hibachigrillandbuffetnj.com

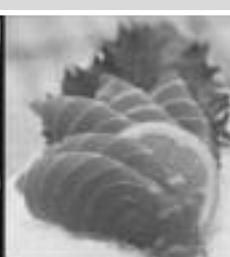
BLUE STAR SHOPPING CENTER

10% DISCOUNT
Seniors 60+, Military,
Police, College Students
Hibachi Grill Supreme Buffet (Show ID)



Large Parking Lot to
Accommodate our Customers

1701 U.S. Highway 22 West • Watchung



MONDAY - THURSDAY

Lunch 11am - 3:30pm	Dinner 3:30pm - 9:30pm
Adult\$7.39	Adult\$10.99
Kids 7-10.....\$5.39	Kids 7-10.....\$6.99
Kids 3-6.....\$3.39	Kids 3-6.....\$5.99
2 & Under.....FREE!	2 & Under.....FREE!

FRIDAY - SATURDAY

Lunch 11am - 3:30pm	Dinner 3:30pm - 9:30pm
Adult\$7.99	Adult\$10.99
Kids 7-10.....\$5.99	Kids 7-10.....\$6.99
Kids 3-6.....\$3.99	Kids 3-6.....\$5.99
2 & Under.....FREE!	2 & Under.....FREE!

SUNDAY ALL DAY DINNER

11am - 10pm

Adult.....\$10.99
Kids 7-10\$6.99
Kids 3-6\$5.99
2 & UnderFREE!

GIFT CERTIFICATES AVAILABLE

SUSHI

Fantastic range of freshly prepared sushi.
Most selection and top quality among all competitors.
It is far from the typical "buffet quality" sushi.
At HIBACHI, you don't sacrifice taste for price.

BUFFET

Elegant, modern, fresh, executed with care and confidence. HIBACHI Grill Supreme Buffet brings together 250+ of fresh-made Asian dishes in eleven buffet bars.

HIBACHI

Choose your favorite ingredients from dozens of seafood, meats and vegetables. Watch our chef preparing them in our special hibachi sauce to create a full-flavored dish.

ASK US ABOUT CATERING YOUR NEXT EVENT!

We have a large party room available for birthday parties, office meetings & weddings.

\$125 OFF
ADULT BUFFET

With purchase of a beverage per person
Watchung • 908-490-1600
Cash Only. Limit 4. Not valid with any other
offers or discounts. Expires 10/31/14.

\$250 OFF
**2 ADULT
BUFFETS**

With purchase of a beverage per person
Watchung • 908-490-1600
Cash Only. Limit 4. Not valid with any other
offers or discounts. Expires 10/31/14.

\$10 OFF
**ANY ONE
PARTY**

Of \$100 or more. Monday - Thursday Only.
Watchung • 908-490-1600
Cash Only. Limit 4. Not valid with any other
offers or discounts. Expires 10/31/14.

\$500 OFF
**4 ADULT
BUFFETS**

With purchase of a beverage per person
Watchung • 908-490-1600
Cash Only. Limit 4. Not valid with any other
offers or discounts. Expires 10/31/14.

**KENILWORTH SILVER CARD ASSOC.
PBA LOCAL #135**
Cordially invites you to attend our annual
**SILVER CARD AWARDS AND
BUSINESS NETWORKING EVENT**

Honoring 2014 Silver Card Recipients

John Weaver – Weaver Printing

Robert Durana – All County Dispensing

Valerie Smith – Kenilworth Police

OCTOBER 9, 2014 AT 6:00 PM

GARLIC ROSE BISTRO

28 North Ave West, Cranford, NJ 07016

Attire: Business Casual

Cost: \$65.00 per person

Event includes a 3-hour cocktail reception
with served appetizers, beer, wine, sangria
and soft drinks. Cash bar.

For Reservations please call:

Rob Schielke at (908) 931-9030

Ken Mentzel at (908) 740-6446

KPD@njdriver.com

Reserve Now - Only 100 tickets available

ST. THERESA SCHOOL KICKS OFF NEW YEAR

St. Theresa School in Kenilworth started the school year off with lots of excited readers. Clifford the Big Red Dog (8th Graders Ciaran Dougherty) and Emily Elizabeth (Hannah

Stevens) visited each class to kick off the Scholastic Book Fair. Mrs. DeMaio's 2nd Grade class enjoyed a group shot with Clifford and Emily.





Rainbow Academy
is now
Lightbridge Academy

We're growing and evolving with a new name and a refreshed look, but we're still the same respected family of early learning centers serving children from six weeks of age through Kindergarten.



Experience why Lightbridge Academy is "The Solution for Working Parents"

560 South Ave., Cranford 908.653.1231 LightbridgeAcademy.com

Mastapeter

FUNERAL HOMES INC.

Family owned and operated.

270 Route Nine
Bayville • NJ 08721
732•269•3100
Anthony P. Mastapeter
Owner/Manager
NJ Lic. No. 3365

400 Faitoute Avenue
Roselle Park • NJ 07204
908•245•1558
Arthur A. Mastapeter
Owner/Manager
NJ Lic. No. 2948



Speedy DOG WASH
SELF-SERVE

Come And See Why We Are...
Simply The Best Dog Wash!

Free treat after every wash!

Full Wash & Dry Start at Just \$15

Follow us on Facebook for Special Offers

2559 Morris Ave. • Union, NJ • 908-964-9027
(Next to Pet Grooming) • speedydogwash.com

Budget Print

70 WESTFIELD AVENUE
CLARK, NJ 07066

Phone: 732.574.1330
Fax: 732.574.0083
E-mail: robbcigi@aol.com

- Printing
- Copying
- Blue Prints
- Graphic Design
- Giant Posters
- Magnetic Signs
- Vinyl Signs
- Vehicle Graphics
- Logo Design
- T-Shirt Graphics
- Newsletters
- Invitations
- Business Forms
- Business Cards
- Much More!

RECEIVE A **VISA**
\$100 Gift Card

WITH PURCHASE OF \$1000 OR MORE AT BUDGET PRINT LLC
With coupon. Exp. 11/30/14

LIMIT ONE GIFT CARD PER CUSTOMER. MAY NOT BE REPRODUCED. \$1000.00 OR MORE MUST BE ON ONE INVOICE. GIFT CARD WILL BE ISSUED UPON PAYMENT IN FULL OF THE QUALIFYING INVOICE.

RECEIVE A **VISA**
\$50 Gift Card

WITH PURCHASE OF \$500 OR MORE AT BUDGET PRINT LLC
With coupon. Exp. 11/30/14

LIMIT ONE GIFT CARD PER CUSTOMER. MAY NOT BE REPRODUCED. \$500.00 OR MORE MUST BE ON ONE INVOICE. GIFT CARD WILL BE ISSUED UPON PAYMENT IN FULL OF THE QUALIFYING INVOICE.

JERSEY LANDSCAPE & GARDEN SUPPLY

Hours:

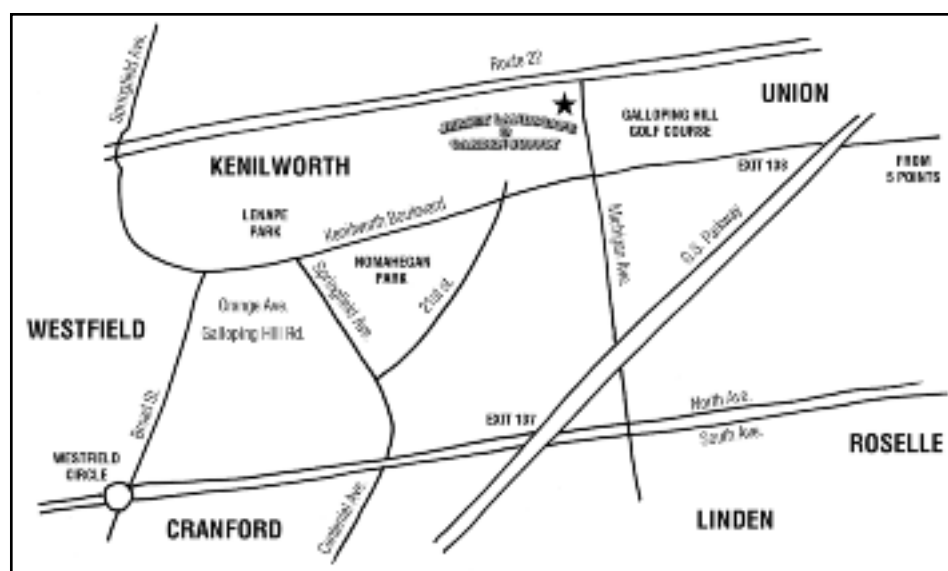
Mon – Sat: 7:30 am – 5 pm
Closed Sunday

908-688-8333

**SERVICING LANDSCAPERS,
MASONS & HOME OWNERS**

528 N. Michigan Ave. Kenilworth, NJ

Largest Display of
Cambridge Pavers
in Union County



See above display and others at www.cambridgepavers.com

SOIL

Prices
per yard

Black Topsoil\$32

Jersey Brown Soil.....\$32

MULCH

Black Dyed\$30

Brown Dyed\$30

Red Dyed\$30

Hardwood\$20

Play Ground\$32

QUARRY BASE MATERIALS

Concrete Sand\$42

¾ Clean Stone.....\$38

Stone Dust\$34

QP\$34

DECORATIVE STONE

3/8 Red Stone.....\$66

¾ Red Stone.....\$64

¾ Pearl Pebble.....\$80

2-4 Pearl Pebble\$80

¾ Arctic White\$82

¾ Riverbed.....\$56

1 ½ Riverbed.....\$58

2-4 Riverbed\$58

**We accommodate
the trade
as well as the
do-it-yourselfers!
We are always
ready to assist.**

HARDSCAPE

Cement



Concrete
Block



Brick



Curbing



Belgium
Block
Diamond
Blades



Limestone
Treads



Polymeric Sand
Paver Sealer
Paver Cleaner

**FREE
Same Day Delivery
5-Yards or more**

DRAINAGE

Pipe • Catch Basins

LAWN & GARDEN



Grass – Seed
Fertilizers
Peat Moss

TOOLS

Mason Tools • Shovels • Rakers



Iron Tool Co.

UNION COUNTY 4-H DOG LOVERS CLUB

GIRL SCOUT HALLOWEEN COSTUME DRIVE

Kenilworth Girl Scout Cadet Troop 40128 is sponsoring a Halloween Costume Drive as a component of earning their Silver Award. The Silver Award is the highest award a Girl Scout cadet can earn. Collection bins are available now through November 1st for donating gently used and new children's costumes at the following locations: Kenilworth Public Library, St. Theresa's Church, Harding School in Kenilworth, and Orange Avenue School in Cranford.

Donations will also be accepted at the Kenilworth Recreation Center on October 11th and November 1st from 9am-2pm.

All items will be donated to the Salvation Army to assist with their community service programs for the homeless, pre-employment training, shelters and disaster services.

The Union County 4-H Dog Lovers Club finished their year by showing at the Hunterdon County Fair on August 23rd. In addition to training and showing dogs, 4-H Dog Club members perform community service projects, such as planting trees in local parks devastated by Hurricane Sandy, donating food and toys to local animal shelters, and making and distributing cookies to a local adult care facility.

4-H is the largest youth organization in the United States with over 7 million participants.

Clubs encourage a "Learning by Doing" ethos, and each member is encouraged to do public service, a judged demonstration in front of one's peers, as well as participate in fun county-wide events. Clubs in Union County include Dogs, Living History, LEGO Robotics, Anime/Manga, and many, many more.

For more information please contact Jim Nichnadowicz or Judi Laganga at 908-654-9854 or Bryan Johnson for the dog project at bjohnson1969@gmail.com.



(left) Jasmyne Mall of Kenilworth. (right) The Union County Dog Lovers Club winning 'Excellent'

L&C

RAILINGS

732-572-7871

Acelcrailings.com

**Visit Our
Showroom**

•

**Shop
at Home
Service**

Serving New
Jersey & Staten
Island Since 1967

Maintenance Free Aluminum Railings

Custom Designs and Colors

915 East Hazelwood Avenue • Rahway, NJ

(908) 276-5367
(201) 666-0003

358 North Avenue East
Cranford, NJ

Lou DiFabio Dan DiFabio
Lic. #4237 Lic. #11749

www.reynolds-plumbing.net

Residential / Commercial / Industrial

E.J.S. Landscaping

- **Weekly Lawn Service**
- **Bush Trimming**
- **Cleanups**

908-247-8386

WANTED:

ALL CARS & TRUCKS: JUNK OR NOT

Late Model Foreign & American New & Used
Auto & Truck Parts:

- Motors • Transmission
- Auto Glass • Computers
- Tail Lights • Doors
- Fenders • AC Compressors

Junk Tow Away

Fast Pick Up

24 HR Service

732-381-2646

Night Towing 732-496-1633

1 Dudley Ct. & Rt. 1 South, Avenel, NJ

Across from Sansone Auto Mall.

10% OFF ALL AC COMPRESSORS

With this ad. Expires 11/10/14.

GRAND OPENING OF OUR NEW KENILWORTH OFFICE

VINYL • WOOD • ALUMINUM • DECORATIVE • LEADED GLASS • ENERGY STAR

SAVE on Windows

Huge Selection...

Over 200 Sizes in Stock!

**CONTRACTORS...We are a
Wholesale Distributor!**

DEEP DISCOUNTS AVAILABLE FOR LICENSED CONTRACTORS

**HOMEOWNERS...Factory Direct
Prices & Installation!**

License #13VH04238600

Call or Visit Our
Showroom Today!

908-354-7600

742 FAIRFIELD AVE • KENILWORTH

www.RoyalPrime.com

IS IT TIME TO
**CASH IN ON THAT OLD
UNWANTED VEHICLE**

TAKING UP SPACE IN YOUR DRIVEWAY? IF SO THEN CALL US!
NEED PARTS FOR YOUR VEHICLE?
YOU CAN CALL US FOR THAT TOO!



CLYDE AUTO RECYCLING INC.

Your #1 source for used & new auto parts

TOP DOLLAR PAID FOR ALL CARS & TRUCKS

***Large selection of rebuildable
and used vehicles for sale***

CASH BUYERS OF SCRAP AUTO CORES

Se habla Española

**FREE
PICKUP**

732-721-0746

Clydenj.com

**FREE
DELIVERY**

6000 Main St, South Amboy, NJ 08879

**OPEN MONDAY-FRIDAY 8:00 A.M. TO 5:00 P.M.
SATURDAY 8:00 A.M. TO 3:00 P.M.**

**Our South Amboy Location is
OPEN SUNDAYS 9am to 4pm**



***CLEANING UP FOR FALL?
CASH IN YOUR UNWANTED SCRAP METAL!***

TWO CONVENIENT LOCATIONS

732-727-2300

732 Main Street, South Amboy, NJ

Exit 124, 125 & 129 off of the Garden State Parkway
Located only minutes from NJ Turnpike, Rt 287, 400 & 35

M-F 8-5 / Sat 8-2 / Sun 9-4

732-462-0543

215 Throckmorton Street, Freehold, NJ

Located only minutes from Rts: 9, 33, 79, 537 & 522

M-F 8-5 / Sat 8-2

ONE OF THE AREA'S LARGEST SCRAP METAL PROCESSORS

**Cash buyers of all types of scrap metal
Highest prices paid for scrap metal**

- PICK UP SERVICE
- 20 – 40 YD. CONTAINER SERVICE
- FLATBED & LOWBOY SERVICE
- SITE CLEAN UP & PLANT DISMANTLING
- 50 – 80 YD. TRAILER SERVICE
- JUNK CAR REMOVAL SERVICE
- INTERIOR & EXTERIOR DEMOLITION
- MOBILE SHEARING & BALING SERVICE
- ON SITE TESTING OF MOST ALLOYS

*Is your scrap metal too much, too big, or too heavy for you to load? No problem,
we will cut, load & transport your scrap metal for you! Call for pricing.*

Cash buyers of all types of scrap metal
Cash buyers of all types of alloys
Cash buyers of all types of automotive cores
Cash buyers of all types of electronic scrap

#1 Bare Bright Copper	\$2.80/lb
#1 Copper	\$2.65/lb
#2 Copper	\$2.55/lb
Light Copper	\$2.50/lb
Insulated Copper	\$1.00/lb & up
Aluminum BX	\$1.00/lb
Clean Aluminum	\$0.50/lb
Aluminum Siding	\$0.52/lb
Aluminum Beverage Cans	\$0.40/lb
Alum/Cu Radiator (Clean)	\$1.25/lb
Alum/CU Radiator (FE End)	\$1.00/lb
Brass	\$1.75/lb
Clean Auto Radiators.....	\$1.50/lb
#1 Lead	\$0.40/lb
#2 Lead	\$0.30/lb
Die Cast	\$0.20/lb
Electric Motors	\$0.20/lb
Iron BX.....	\$0.20/lb
Sealed Units	\$0.15/lb
Auto Batteries	\$0.25/lb
Steel Case Batteries.....	\$0.25/lb
Starter/Alternators	\$0.20/lb
AC Compressors	\$0.20/lb
Catalytic Converters	\$5-\$10/Piece
Aluminum Rim W/Tire	\$2-\$5/Piece
Cast Iron	\$10.00/100 lbs
Light Iron	\$8.00/100 lbs
Heavy Iron	\$10.00/100 lbs
Auto Motors.....	\$10.00/100 lbs
Automobiles.....	\$8.00/100 lbs
Machinery/Torchable Steel	\$8.00/100 lbs
Fuel/Oil/Holding Tanks	\$8.00/100 lbs
Insulated Aluminum	\$0.25/lb

Prices are subject to change without notice.
Please call for current prices.

**We suggest you weigh your material – know
what you have where ever you sell it. Weight
is just as important as the price you get.**