

New Providence NEWS

Published by Renna Media

Issue 8 • June 2016

INDEPENDENCE DAY CELEBRATION

SUNDAY, JULY 3

South Street
from Gales Drive to
Springfield Avenue

DJ JOHN SOUREN OF CLUB SOUREN

JUGGLER WILL SHAW "CHALK ON SOUTH"

(kids of all ages can get a free "bucket" of chalk to create art and messages on the street)

Fireworks, sponsored by Investors Bank will begin at approximately 9:30 PM.

Be sure to bring lawn chairs or blankets to enjoy the festivities. In case of rain, information will be posted on the borough website,

www.newprov.org

OUR HOUSE, INC. 17TH ANNUAL 4 MILE RUN/2 MILE WALK BENEFITS ADULTS WITH DEVELOPMENTAL DISABILITIES

On Saturday, May 21st over 300 runners and walkers joined together at the Village Green in Summit, New Jersey for the 17th Annual Our House 4 Mile Race and 2 Mile Walk. This USATF sanctioned event drew sports enthusiasts and casual runners and walkers alike thanks to its unique mileage and fun, friendly atmosphere where participants raise money to support adults with developmental disabilities. All proceeds from the event go directly to the Our House Foundation which funds programs and services provided by Our House, Inc. Thanks to community support, donations and sponsors, including Associate Sponsors CR Bard Foundation and Investors Bank, Our House hoped to reach its goal of raising \$150,000 at the event.

Master of Ceremonies, John Elliott of CBS News, was on hand to emcee the event. "I always feel inspired when I help out Our House! I feel a special connection with many of the residents and participants, since it reminds me of my late brother in law, who, in spite of a disability, lived a rich life, full of laughter and love. At each Our House event, I hear the same kind of laughter and feel the love from the amazing people that participate," said Mr. Elliott. "I also know how important it is that people with special needs receive excellent care and ongoing social, educational and employment opportunities. The committed Our House staff and volunteers work hard to ensure that all individuals can live life to their full potential by providing them with ongoing support and chances to learn and grow"

In addition to the USATF certified races, the 13th Annual 'Everyone's A Winner Race' was held. This is a free event for the special needs community. This feel good race is a highlight of the day with medals presented to all of the participants by Mr. Elliott.

The 4 mile and 2 mile race courses traveled through the beautiful rolling hills and flat terrain of gorgeous residential and downtown Summit, New Jersey. In addition to race activities, arts and crafts, face painting, complimentary food and a DJ were hand to add to the festivities. All participants received a race bag that included a sleeveless tech tee and other goodies.

The mission of Our House Inc. is (1) to provide healthy and stimulating environments for people with developmental and other disabilities, through the provision of community residences, employment opportunities, social programs and other supports designed to help them achieve their full potential for living meaningful and productive lives; and (2) to provide affordable housing for low income individuals, consistent with IRS guidelines for low income housing programs, as a means of relieving the poor and distressed. Our House Inc. offers programs to individuals across New Jersey in towns including: Basking Ridge, Berkeley Heights, Bound Brook, Bridgewater, Maplewood, Millington, New Providence, Newark, Summit, Union, Verona, West Orange and Westfield. They are slated to open their newest residence in Livingston in summer 2016.



(above r-l) Master of Ceremonies, John Elliott of CBS News and Cathy Colford, Director of Development Our House, Inc. pose with runners.



PRSR STD
U.S. POSTAGE
PAID
PHILA PA 191
PERMIT NO.7575

ECRWSS

*****ECRWSSDDM*****

**POSTAL PATRON
NEW PROVIDENCE, NJ 07974**

Colonial

APPLIANCE

**Discount Prices Plus
FREE Local Delivery!**



**Our 36th year
Serving the tri-state area**

908-665-1212

25 Passaic Street
New Providence, NJ 07974

colonialappliance.com

New Providence NEWS is published by Renna Media. 4,700 newspapers are printed monthly and mailed to every business and resident in New Providence.

Although great care has been taken to ensure the information contained within is accurate, Renna Media assumes no liability for errors or omissions.

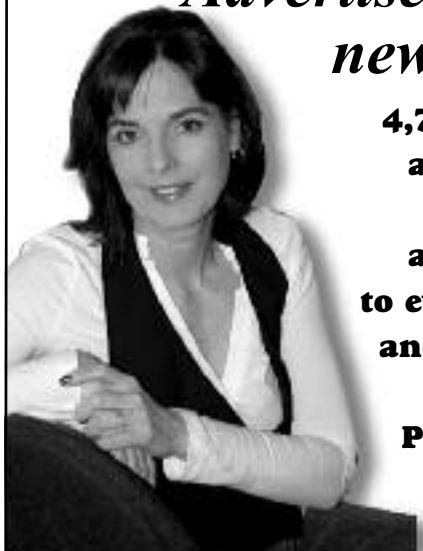
© 2016 Contents of this newspaper cannot be reproduced without written consent from Renna Media LLC.

**To submit content
call Tina at 908-418-5586
Email: editor@rennamedia.com**

**New Providence NEWS
is online at
www.rennamedia.com
like us on
[facebook.com/
New Providence NEWS](https://www.facebook.com/NewProvidenceNEWS)**

**Advertise in this
newspaper**

**4,700 papers
are printed
monthly
and mailed
to every home
and business
in New
Providence.**



**Reserve space in the next issue.
Call Tina today at 908-418-5586
or email info@rennamedia.com**

NEW PROVIDENCE LIONS CLUB 19TH ANNUAL FRANK A. PIZZI, JR. MEMORIAL GOLF TOURNAMENT

The Tournament will be held at Beaver Brook Country Club on Monday June 13th, 2016

You can help us help our community by supporting our event in several ways. Each sponsor/Donor will be recognized with signage that day at the event, on the course and on our website. There are a variety of ways to support us:

Major Sponsorships (\$500) includes Breakfast, Lunch, Beverages. Hole Sponsorships (\$100). You may also contribute a Raffle Prize of your choosing. Sign up for a Foursome \$600, Individuals \$160, Seniors \$150

Details and Sign up forms are available on our Web Site: nplions.org or you may select the link

golfouting@nplions.org to request additional information via email.

The New Providence Lions Club donates back to the community every dollar it collects. Being a Lion empowers you to help others in a way that no one person could alone. The Lions are dedicated to helping others. Lions make a difference!

Organizations that benefit from your annual support are: NP Recreation Dept., Fire Dept., Community Service Assoc., EMS Rescue Squad, Senior Citizens Center, PBA, NP HS Scholarships, NP Historical Society, Health Fair, NP Public Library. For more information please email info@nplions.org

GUN VIOLENCE AWARENESS DAY

Mayor Allen Morgan made an important announcement on May 23rd, when he joined several officials in declaring June 2nd as "Gun Violence Awareness Day" in New Providence.

Mayor Morgan, before declaring June 2nd "Gun Violence Awareness Day," first mentioned the statistics on gun violence in the United States. Every day 91 Americans are killed by gun violence and there are countless others injured; and American's are 25 times more likely to be murdered with guns than people in other developed countries.

The "Gun Violence Awareness Day" started when a teenager was killed on January 29th, 2013 after she walked in President Obama's Inaugural Parade. People honored the teen by wearing orange, a color worn by hunters to prevent accidental shootings, as a symbol of the value of human life.

According to the Mayor, public safety is his highest priority and he urged residents to wear orange on June 2nd, "to show support in the belief that there is more we can do to end gun violence."

NEW PROVIDENCE MEMORIAL LIBRARY

377 Elkwood Avenue | New Providence, Nj 07974

Colleen Byrne, Library Director • www.newprovidencelibrary.org • 908.665.0311

**The Tuesday movie will be The Lady in the Van
June 7th,**

where Maggie Smith portrays a very different characters from her usual.

Are you a baseball fan?

Monday, June 13th at 7 p.m.

Fans of any age are welcome at the regular Baseball Discussion Group's meetings. Come to listen and share.

**Tuesday's movie Spectre,
June 14th.**

the latest and last Bond movie with Daniel Craig and the oldest actress to ever portray a Bond girl, Monida Bellucci. Get ready for adventure.

Adult Summer Reading Program.

Starts Wednesday, June 15th

Pick up a rules sheet in the library and start tracking your reading for entries into prize drawings.



**WANTED:
ALL CARS & TRUCKS: JUNK OR NOT**

Late Model Foreign & American New & Used
Auto & Truck Parts:
• Motors • Transmission
• Auto Glass • Computers
• Tail Lights • Doors
• Fenders • AC Compressors

**Junk Tow Away
Fast Pick Up
24 HR Service**

732-381-2646

Night Towing 732-496-1633

1 Dudley Ct. & Rt. 1 South, Avenel, NJ
Across from Sansone Auto Mall.

10% OFF ALL AC COMPRESSORS
With this ad. Expires 7/10/16.

N. Cocuzza Construction LLC

908-930-3123

35+ Years
of Satisfaction

QUALITY - EXPERIENCE - INTEGRITY
DESIGN PROFESSIONALS UPON HIRE!



- New Construction • Kitchens
- Additions • Baths
- Renovations • Basements

Fully Insured - Reg# 13HV05372200

10% OFF
PROJECT WITH AD BEFORE 7/20/16

Avon's NORWOOD Inn

FOOD • DRINKS • ENTERTAINMENT



618 SECOND AVENUE • AVON-BY-THE-SEA, NJ • 732-775-3900
www.norwoodinn.com • facebook: Norwood Inn • instagram: @the_norwood_inn
Mon-Fri 4pm - 2am / Sat/Sun 12pm-2am



BRIAN KIRK & THE JIRKS



JOBONANNO & THE GODSONS of SOUL



BOBBY BYRNE

Entertainment Schedule

Sat June 11 "The Vinny's" 9pm
Sun June 12 Bobby Byrne 4:30pm
Fri June 17 "Sweet Chin Music" 10pm
Sat June 18 Pat Roddy 10pm
JUNE 19th - FATHER'S DAY BLOWOUT!
Sun June 19 'Brian Kirk & the Jirks' 6pm
Sat June 25 Pat Roddy 10pm
Sun June 26 Bobby Byrne 4:30pm
Thu June 30 Backspin 50 5pm

JULY 2016

Fri July 1 'Brian Kirk & the Jirks' 6pm
Sat July 2 Pat Roddy 10pm
Sun July 3 Bobby Byrne 4:30pm
Mon July 4 Pat Roddy 10pm
"The Barksdales" 5pm

Thu July 7 Backspin 50 5pm
Fri July 8 'Waiting on Mongo' 10pm
Sat July 9 Pat Roddy 10pm
Sun July 10 Bobby Byrne 4:30pm
Thu July 14 Backspin 50 5:00pm
Fri July 15 "Enjoy!" 10pm
Sat July 16 Pat Roddy 10pm
Sun July 17 Pat Roddy 10pm
Thu July 21 Backspin 50 5:00pm
Fri July 22 "Sweet Chin Music" 10pm
Sat July 23 Pat Roddy 10pm
Sun July 24 Bobby Byrne 4:30pm
'Brian Kirk & the Jirks' 10pm
Thu July 28 Backspin 50 5:00pm
Sat July 30 "The Medicine Men" 6pm
Pat Roddy 10pm

AUGUST 2016

Thu August 4 Backspin 50 5:00pm
Fri August 5 'Waiting on Mongo' 10pm
Sat August 6 Pat Roddy 10pm
Sun August 7 Bobby Byrne 4:30pm
Thu August 11 Backspin 50 5:00pm
Sat August 13 "Joebonanno and the Godsons of Soul" 7pm
Sun August 14 'Brian Kirk & the Jirks' TBA
Thu August 18 Backspin 50 5:00pm
Sat August 20 "Enjoy!" 10pm
Sun August 21 Bobby Byrne TBA
Thu August 25 Backspin 50 5:00pm
Sat August 27 "Joebonanno and the Godsons of Soul" 7pm
Sun August 28 'Brian Kirk & the Jirks' TBA

SEPTEMBER 2016

Thu September 1 Backspin 50 5:00pm
Sat September 3 Pat Roddy 10pm
Sun September 4 Bobby Byrne 4:30pm
Pat Roddy 10pm
Fri September 16 Nicole & Denise 7pm

OCTOBER 2016

Sun October 2 'Brian Kirk & the Jirks' TBA
Fri October 14 Nicole & Denise 7pm

NOVEMBER 2016

Sun November 6 'Brian Kirk & the Jirks' TBA

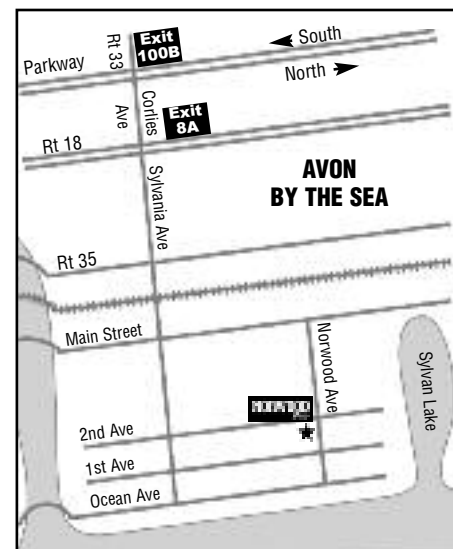
Visit NorwoodInn.com for updates to schedule.



PAT RODDY



ENJOY!



STRIDES4STRENGTH: A WALK TO END DOMESTIC VIOLENCE

Join the YWCA Union County for the First Annual Strides4Strength: A Walk to End Domestic Violence on Sunday, June 12th from 9am-2pm. Every step raises awareness and all event proceeds support the YWCA Union County's Domestic Violence Programs. The event is free for children under 12 & furry friends. Register today at Strides4Strength.EventBrite.com.

The YWCA Union County, now 96 years old, has been providing services to survivors of domestic violence since 1978. The YWCA is the only agency in Union County that provides an emergency domestic violence shelter, in addition to supportive and transitional housing,

counseling, legal advocacy and representation, children's services, 24 hour crisis intervention and more. All YWCA services are free and confidential.

Domestic violence is a crime that impacts people regardless of race, ethnicity, economic status, education, or religion; it is estimated to impact 1 in every 3 women nationally, and 1 in every 7 men. It impacts more women than breast cancer, lung cancer and ovarian cancer combined.

Domestic violence breaks all barriers of race, ethnicity, religion, sexual orientation, gender and socioeconomic status. It is a crime that impacts our entire community. It is estimated that 1 in every 4 women will be effected by domestic

violence in her life, which equals more than breast cancer, lung cancer, and ovarian cancer combined. Domestic violence is estimated to cost employers in the U.S. up to \$8.3 billion each year. An average of 3 women per day in the United States are killed as a result of domestic violence.

Register today at Strides4Strength.EventBrite.com. Interested in renting vendor space at the event? Please, contact us at tpackard@ywcaunioncounty.org for more information.

If you or anyone you know is experiencing domestic violence, call the 24-Hour Hotline at 908-355-HELP (4357).



O'BRIENS & SONS
PAVING AND MASONRY

908-205-7932
www.obriensandsonspavingandmasonry.com
Email: info@obriensandsonspavingandmasonry.com



- Asphalt Paving
- Concrete Stoops
- Concrete Pavers
- Paver Stoops
- All Styles of Stucco
- Masonry Repairs
- Masonry Walls
- Hardscaping Patios
- Paver Patios
- Water Fountains
- Chimney Restoration

Scotch Plains NJ 07076
LIC #13VH08804600

Independent Living
For seniors 65 and over

The Chelsea at Warren

Completion this spring
Brand new 1 & 2 bedroom apts
Full kitchens, underground parking
No buy-in required



RESERVE YOUR APARTMENT NOW!
CALL 908-903-0911
274 KING GEORGE ROAD • WARREN, NJ 07059
WWW.CHILTSSENIORLIVING.COM



**FROM THE CLASSROOM
TO THE OFFICE IN
AS LITTLE AS 6 MONTHS.**

Paralegal Studies Program

- American Bar Association Approved
- Employment Assistance
- 6-Month Day and 12-Month Evening Programs Available

CLASSES START

FLORHAM CAMPUS
Madison
Day - Thur., 6/23
Evening - Tues., 6/21

METROPOLITAN CAMPUS
Hackensack
Day - Wed., 6/22
Evening - Thur., 6/23



**FAIRLEIGH
DICKINSON
UNIVERSITY**

877-FDU-5222 | paralegal@fdi.edu | paralegal.fdi.edu



A Symbol of Hope
*A butterfly lights beside
us like a sunbeam
And for a brief moment
its glory and beauty
belong to our world
But then it flies again
And though we wish it
could have stayed...
We feel lucky to have seen it.*




**BRADLEY
& SON FUNERAL HOMES, LLC**
A life well remembered.

**Bradley Funeral Homes
invites you to discover a
new way to pay tribute
to your lost loved ones.**

We are proud to introduce our new Bradley, Brough & Dangler Funeral Home & Tribute Center to the families of Summit and New Providence.

Our new location, at 299 Morris Avenue in Summit, is not only a beautiful, spacious funeral home with ample parking, but it's also a Tribute Center. This is a sign of Bradley's dedication to making every life well remembered through personalized, meaningful tributes. We believe every life is a unique work of art, and our caring, professional team wants to help you celebrate that uniqueness in every way.

**Please come visit our new Tribute Center and
send a personalized tribute of your own.**

Sundays, June 5 and June 12 from 12:00-2:00 pm
Monday, June 13 from 4:00-6:00 pm

Patrick Reynolds, Manager, N.J. Lic. No. 4059
Bradley, Brough & Dangler Funeral Home & Tribute Center
299 Morris Avenue Summit, NJ 07901
(908) 273-2323 www.bradleyfuneralhomes.com

JERSEY LANDSCAPE & GARDEN SUPPLY

Hours:

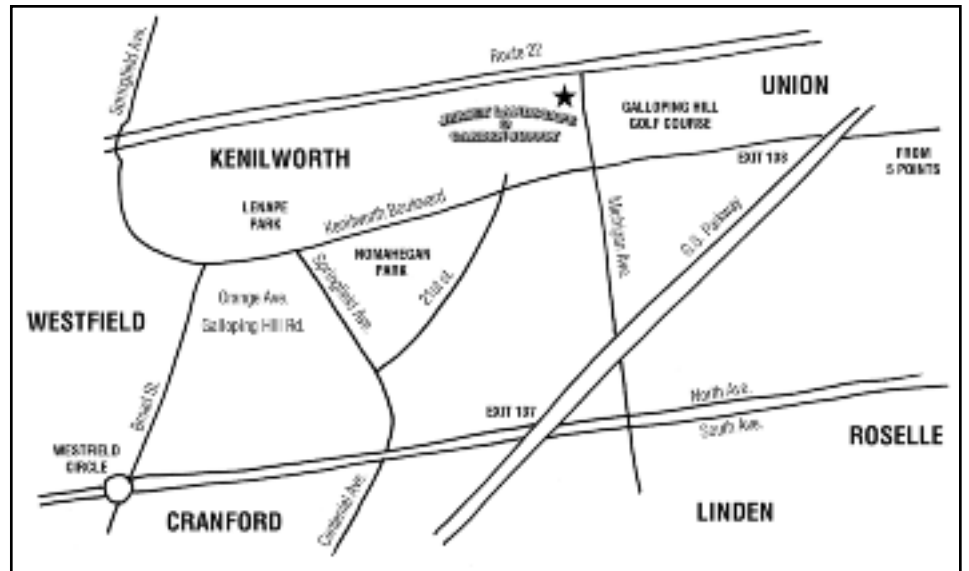
Mon - Sat: 7:30 am - 5 pm
Sun: 8:30 am - 3 pm

908-688-8333

**SERVICING LANDSCAPERS,
MASONS & HOME OWNERS**

528 N. Michigan Ave. Kenilworth, NJ

Largest Display of
Cambridge Pavers
in Union County



See above display and others at www.cambridgepavers.com

SOIL

Prices
per yard

Black Topsoil\$35
Jersey Brown Soil\$35

MULCH

Black Dyed\$30
Brown Dyed\$30
Red Dyed\$32
Hardwood\$20
Play Ground\$35

QUARRY BASE MATERIALS

Concrete Sand\$46
3/4 Clean Stone\$38
Stone Dust\$34
QP\$34

DECORATIVE STONE

3/8 Red Stone\$66
3/4 Red Stone\$64
3/4 Pearl Pebble\$82
2-4 Pearl Pebble\$82
3/4 Arctic White\$82
3/8 Riverbed / Pea Gravel\$56
1 Riverbed\$58
2-4 Riverbed\$58

Prices subject to change without notice.

**We accommodate
the trade
as well as the
do-it-yourselfers!
We are always
ready to assist.**

HARDSCAPE



Cement

Concrete
Block



Curbing



Belgiur
Block

Diamond Blades



Limestone
Treads



Polymeric Sand
Paver Sealer
Paver Cleaner

**FREE
Same Day Delivery
5-Yards or more**

DRAINAGE

Pipe • Catch Basins

LAWN & GARDEN



Grass - Seed
Fertilizers
Peat Moss

TOOLS

Mason Tools • Shovels • Rakers



son Tool Co.

NEW PROVIDENCE PAL SPRING COMBINE

On May 21ST, the New Providence PAL Football program co-hosted the First Annual Spring Combine and Signing Day Event with the New Providence High School Football program, the goal of the event is to encourage healthy competition amongst participants from all of the New Providence sports programs.

This event was open to all current 3rd through 8th Grade New Providence students. The amount of athletes that chose to attend was vast and these competitors relished at the opportunity to show off their skills.

The Combine Event gave the kids a chance to prove who can run the fastest, jump the highest, throw the farthest, and more. The competitors

were separated by grade level and went through several stations to test their athletic ability. Station events were administered by coaches or high school players, which gave the younger New Providence sports players an opportunity to form a bond with the more experienced athletes.

When the competition was over, prizes were given out to top performers in six events across five grade levels and all participants received a Spring Combine Event t-shirt sponsored by Redwood Tree and Landcare. These up and coming athletes really enjoyed a night of friendly competition and with amount of parental support present, it is almost guaranteed that their athletic future is bright.

ART CAMP FOR KIDS & TEENS
REGISTER NOW ONLINE or BY PHONE!

duCRET School of Art 1030 Central Ave.
 Plainfield, NJ
 908-757-7171
 www.ducet.edu

SUMMER ART WORKSHOPS FOR ADULTS!!!

THRU JULY + AUGUST! Drawing, Stained Glass, Ceramics, Oil, Acrylic, Pastel, Silkscreen, Graphic Design, Film Making, Canvas Stretching, Plein Air, Tile Painting, Learn Excel & Much More!

GELORMINI'S AUTOMOTIVE SERVICE

Mike Gelormini, Owner (908) 464-6500
 ALL TYPES OF FOREIGN & DOMESTIC REPAIRS
 NJ licensed inspection facility.
www.gelorminiauto.com
 1275 Springfield Avenue
 New Providence, NJ

Contractor License # 13VH01784700

Bowman

Landscaping • Excavating
 Tree Service • Brick Patios & Walkways
 908-755-6839
 Family owned and operated since 1986.
www.bowmanlandscaping.com



Call or Email us today

(908) 771-0550

Email:

dcbendush@msn.com

LAW OFFICE OF
DAVID C. BENDUSH, ESQ.
www.berkeleyheightslawyer.com

- Over 28 years of experience
- Licensed New Jersey and U.S. Supreme Court
- Appointed by Superior Court of NJ Arbitrator and ESP Panelist

PRACTICE AREAS INCLUDE:



- Matrimonial and Domestic Violence
- Chancery Litigation
- Real Estate Closings and Landlord & Tenant
- Trusts and Estates/Probate Litigation
- Personal Injury

Offices at:

310 Springfield Avenue • Suite 10
Berkeley Heights, N.J.

34 North Main Street • 2nd Floor
Marlboro, N.J. (by appointment only)



HIBACHI GRILL

supreme buffet

**Serving
LOBSTER or CRAB LEGS
with other Special Items
Every Holiday**

For more information, please call

908-490-1600

Fax: 908-490-1601

www.hibachigrillandbuffetnj.com

BLUE STAR SHOPPING CENTER



Large Parking Lot to
Accommodate our Customers

10% DISCOUNT
Seniors 60+, Military,
Police, College Students
Hibachi Grill Supreme Buffet (Show ID)

1701 U.S. Highway 22 West • Watchung



MONDAY - THURSDAY

Lunch 11am - 3:30pm	Dinner 3:30pm - 10:00pm
Adult\$7.99	Adult\$11.59
Kids 7-10.....\$5.99	Kids 7-10.....\$6.99
Kids 3-6.....\$3.99	Kids 3-6.....\$5.99
2 & Under.....FREE!	2 & Under.....FREE!

FRIDAY - SATURDAY

Lunch 11am - 3:30pm	Dinner 3:30pm - 10:30pm
Adult\$7.99	Adult\$11.59
Kids 7-10.....\$5.99	Kids 7-10.....\$6.99
Kids 3-6.....\$3.99	Kids 3-6.....\$5.99
2 & Under.....FREE!	2 & Under.....FREE!

SUNDAY ALL DAY DINNER

11am - 10pm
Adult.....\$11.59
Kids 7-10\$6.99
Kids 3-6\$5.99
2 & Under.....FREE!

GIFT CERTIFICATES AVAILABLE

SUSHI

**Fantastic range of freshly prepared sushi.
Most selection and top quality among all competitors.
It is far from the typical "buffet quality" sushi.
At HIBACHI, you don't sacrifice taste for price.**

BUFFET

**Elegant, modern, fresh, executed with care and
confidence. HIBACHI Grill Supreme Buffet brings together
250+ of fresh-made Asian dishes in eleven buffet bars.**

HIBACHI

**Choose your favorite ingredients from dozens of seafood,
meats and vegetables. Watch our chef preparing them in
our special hibachi sauce to create a full-flavored dish.**

ASK US ABOUT CATERING YOUR NEXT EVENT!

We have a large party room available for birthday parties, office meetings & weddings.

\$125 OFF
ADULT BUFFET

With purchase of a beverage per person
Watchung • 908-490-1600
Cash Only. Limit 4. Not valid with any other
offers or discounts. Expires 7/10/16.

\$250 OFF
**2 ADULT
BUFFETS**

With purchase of a beverage per person
Watchung • 908-490-1600
Cash Only. Limit 4. Not valid with any other
offers or discounts. Expires 7/10/16.

\$10 OFF
**ANY ONE
PARTY**

Of \$100 or more. Monday - Thursday Only.
Watchung • 908-490-1600
Cash Only. Limit 4. Not valid with any other
offers or discounts. Expires 7/10/16.

\$500 OFF
**4 ADULT
BUFFETS**

With purchase of a beverage per person
Watchung • 908-490-1600
Cash Only. Limit 4. Not valid with any other
offers or discounts. Expires 7/10/16.

Accents Dancewear

Get Ready For Summer Camps & Intensives



- Dance Wear
- Gymnastics Wear
- Swim Wear For Children & Adults

We Are The Place To Go For:

- Leotards
- Skirts/Tutus
- Tights
- Swimwear
- Bags
- Accessories
- Shoes: Ballet, Tap, Jazz, Hip Hop, Pointe*

*Specially Trained Pointe Shoe Fitters Available By Appointment.

**258 Springfield Ave.
Berkeley Hts., NJ 07922
908-508-1860
Accentsdancewear.com**




20% OFF

ANY 1 REG. PRICED ITEM
Good Thru 8/31/16 (Excludes Luggage).

Motorcycle Run & Family BBQ

Bikers for Brooke

To benefit the Brooke Healey Foundation
fighting pediatric brain cancer

Images courtesy of Kelley Marie Photography

Rain or Shine! Sunday, June 12, 2016

RIDE INFO

The 4th Annual Ride is police escorted by the Blue Knights NJ VIII Honor Guard. AMA Sanctioned.


When: Sunday, June 12, 2016

Start Location:
New Providence Community Pool
1378 Springfield Ave, New Providence, NJ

Registration: 9:00 - 10:30 am

Kickstands up: 10:45 am

Cost (Includes BBQ):
\$25/driver; \$15/passenger



FAMILY BBQ


You do not have to ride to attend!

Where: Mount Carmel Hall
56 River Road, Berkeley Heights, NJ

Time: 12:00 - 4:00 pm

Cost: \$25/person; \$10/child under 11
\$50/family includes 2 adults

**Live Music • 50/50
Cash "Beer Garden"
Car Cruise • Game Truck
Face Painting • Sand Art
Bounce House • Dunk Tank • Ice Cream
Sit-on-a-bike Selfie • And MORE!**



www.brookehealey.com

Like Us On 

\$1,300
Stainless Steel Liner
5 inch, 6 inch
With coupons. Cannot be combined with any other offer.



MURSELI PRO CONSTRUCTION

800-650-0968

FREE ESTIMATES

- All Work Guaranteed
- 24/7 Emergency Service
- 20% Senior Discount
- Major Credit Cards
- NJ Lic. 13VH08570100

READ OUR REVIEWS ON
www.homeadvisor.com

DANGER
CARBON MONOXIDE

Carbon monoxide is invisible, odorless, and can kill you!

Spring Special
COMPLETE SET OF STEPS
Up to 6 Feet, 5 Steps
\$2,600
(Brick, Limestone & Concrete)
With coupons. Cannot be combined with any other offer. Expires 6/30/16

\$79.99
GUTTER CLEANING
(ANY HOUSE)
With coupons. Cannot be combined with any other offer.

15% off
FOUNDATION REPAIR
With coupons. Cannot be combined with any other offer.

\$1000 off
ANY NEW COMPLETE ROOF
With coupons. Cannot be combined with any other offer.

15% off
ROOF LEAKS
(GUARANTEED)
With coupons. Cannot be combined with any other offer.

MASONRY

DRIVEWAYS
STEPS
BRICK & BLOCK
SIDEWALKS
REPAIR



ROOFING

RE-ROOF
NEW ROOF
ROOF REPAIRS
SHINGLES
FLAT ROOF



CHIMNEY

CLEANING
RE-LINE
REPAIRS
REBUILD
CAPPING



GUTTERS

CLEANING
INSTALLATION
SCREENING
REPAIRS
REPLACEMENTS



The Overlook Auxiliary, an organization that has had a significant impact on Overlook Hospital itself, the staff, patients, and community, celebrated over 100 years of community service at its Spring Luncheon at Fairmont Country Club on May 19.

The volunteer organization's ongoing mission is to cultivate a compassionate and comforting environment throughout the entire Medical Center community.

The Auxiliary serves members of the Overlook community, and has supported numerous initiatives, from the Gift Shop & Bloom, to the Thomas Glasser Caregivers Center, the refurbishment of the third floor Oncology Lounge, and raising funds for the Valerie Center for pediatric cancer treatment. This year, the Auxiliary honored its co-chairs of the 2015

House Tour for their dedication and fundraising efforts. The 2015 House Tour raised over \$30,000 for the Eating Disorders Clinic at Overlook Hospital.

The luncheon featured the music of "Married to Broadway" headlined by Ron Sharpe and Barbra Russell, an accomplished husband-and-wife team who met on the stage of Broadway's Les Miserables. Joining in the performance was Samantha Sharpe, their equally accomplished daughter, and Daniel Zorovich, their Broadway colleague.

The Overlook Auxiliary is a volunteer organization cultivating a compassionate and comforting environment throughout the entire Medical Center community with active volunteering and imaginative fundraising. More information is available at www.oaux.org.



(above) The 2015 House Tour committee raised over \$30,000 for the Eating Disorders Clinic at Overlook Hospital.

Al's Carpentry Home Improvements

25 Years in Business

Albino Carvalho

Bathrooms - Basements - Decks - Tile - Additions
Doors/Windows - Molding - Dry Walling
- Sheetrock - Kitchens - Plumbing - Electrical
- Interior & Exterior Painting

Call: 908.451.2230 **10% OFF**
alscarpentry11@aol.com **ON ANY JOB**

Jazz at Faith Concert to Benefit Imagine

In a benefit for Imagine, A Center For Coping With Loss, Jazz at Faith Presents The Max Morden Five.

Sunday, June 12, 2016

4:00 pm

FAITH LUTHERAN CHURCH

524 South St. • New Providence, NJ

FREE ADMISSION

appropriate for all ages, and free will offering will be given to Imagine.

*Please join us to support
Imagine's new home!*



Offering a changing list of specialty cocktails, tap and bottled beers and a wide selection of wines, Providence is serving Modern American cuisine which includes an all-day bar menu, lunch, dinner and a sit down brunch on Sundays to come.

COME DINE ON OUR SPACIOUS PATIO



1288 SPRINGFIELD AVE • NEW PROVIDENCE, NJ

908-464-0096

MONDAY - THURSDAY 11:30 am - 10 pm

FRIDAY & SATURDAY 11:30 am - 11 pm

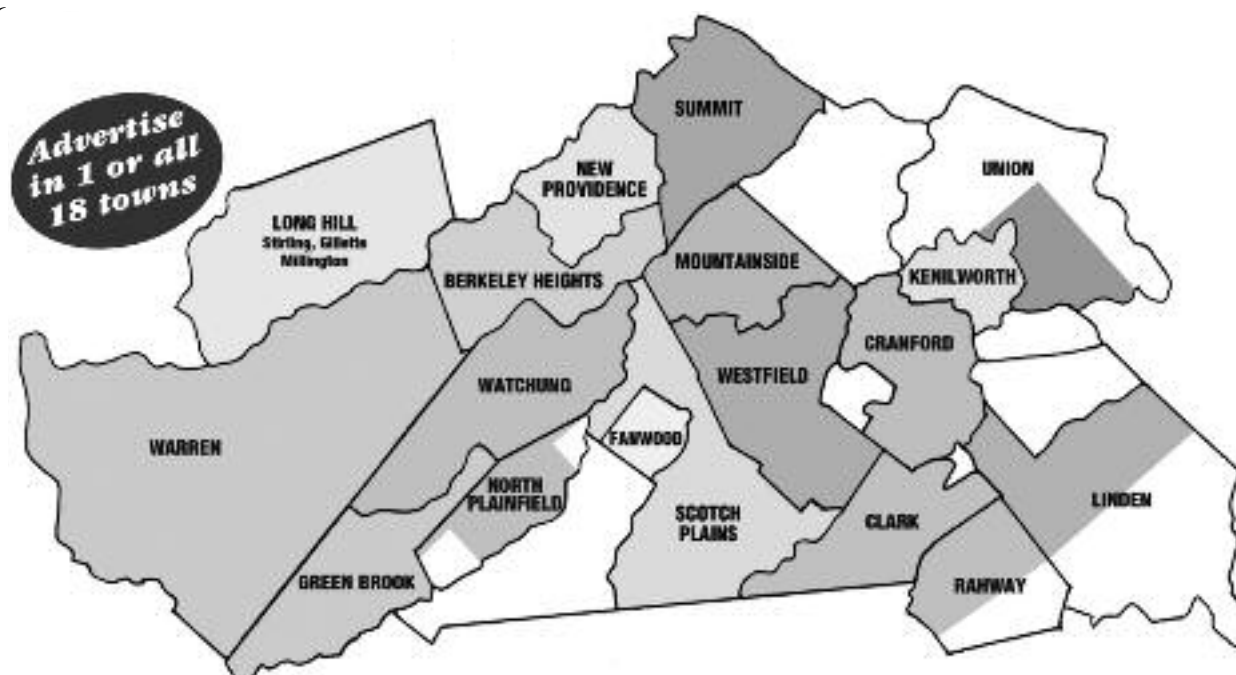
SUNDAY 4 pm - 9 pm (*Sunday brunch is coming!*)



www.providencebarandkitchen.com

RENNA MEDIA **NEWSPAPER RATE SHEET** **WE MAIL** **100,000** **NEWSPAPERS** **MONTHLY!**

To place an ad call:
Tina Renna at 908-418-5586
or Joe Renna at 908-447-1295
 email: info@RennaMedia.com
 Fax: 908-709-9209



Qty: 4,800
 Mailed to every home
 and business.
Zip: 07922



Qty: 6,500
 Mailed to every home
 and business.
Zip: 07066



Qty: 9,800
 Mailed to every home
 and business.
Zip: 07016



Qty: 3,000
 Mailed to every home
 and business.
Zip: 07023



Qty: 3,000
 Mailed to every home
 and business.
Zip: 08812



Qty: 3,600
 Mailed to every
 home and business.
Zip: 07033



Qty: 6,500
 5,400 mailed to homes
 and businesses.
Zip: 07036



Qty: 3,600
 Mailed to every home
 and business in Gillette,
 Millington and Stirling.
**Zips: 07933,
 07964, 07980**



Qty: 2,800
 Mailed to every home
 and business.
Zip: 07092



Qty: 4,700
 Mailed to every home
 and business.
Zip: 07974



Qty: 6,500
 Mailed to every home
 and business in 07060.
Zip: 07060



Qty: 5,500
 4,100 mailed to homes
 and businesses.
Zip: 07065



Qty: 9,500
 Mailed to every home
 and business.
Zip: 07076



Qty: 9,600
 Mailed to every home
 and business.
Zip: 07901



Qty: 5,500
 5,000 mailed to
 homes and businesses.
Zip: 07083



Qty: 6,200
 Mailed to every home
 and business.
Zip: 07059



Qty: 3,000
 Mailed to every home
 and business.
Zip: 07069



Qty: 11,800
 Mailed to every home
 and business.
Zip: 07090

Past issues can be found at RennaMedia.com

Artwork included in ad price.

Units	Size	RATE FOR ANY 1 NEWSPAPER	RATE FOR ANY 3 NEWSPAPERS	RATE FOR ANY 6 NEWSPAPERS	RATE FOR ANY 9 NEWSPAPERS	RATE FOR ANY 12 NEWSPAPERS	RATE FOR ANY 15 NEWSPAPERS	RATE FOR ALL 18 NEWSPAPERS
1 Unit - Business card	3.25" x 2"	\$60	\$150	\$250	\$340	\$400	\$450	\$500
2 Units	3.25" x 4"	\$100	\$250	\$400	\$500	\$600	\$700	\$800
4 Units	6.5" x 4"	\$180	\$450	\$700	\$950	\$1100	\$1300	\$1500
6 Units	10" x 4"	\$240	\$600	\$900	\$1250	\$1400	\$1650	\$1900
9 HALF PAGE	10" x 6"	\$320	\$800	\$1000	\$1350	\$1500	\$1800	\$2100
12 Units	10" x 8"	\$360	\$900	\$1200	\$1550	\$1800	\$2150	\$2500
18 FULL PAGE	10" x 14"	\$400	\$1000	\$1400	\$1750	\$2000	\$2400	\$2800
FRONT PAGE BANNER	8.25" x 2"	\$320						
BACK COVER	10" x 14"	\$600						

Back cover and front page banner reserved on first come, first served basis.
 Current advertiser has right of first refusal.

PAY FOR 6 MONTHS AND GET 1 FREE

Make Checks payable to Renna Media, 202 Walnut Avenue, Cranford, NJ 07016

GARDEN CLUB DONATES CANVAS PRINTS IN A GESTURE OF APPRECIATION

New Providence NEWS • Page 11 • June 2016

The Garden Club donated four canvas prints of flower photos to the DeCorso Community Center during a club meeting held on May 16th. Stacy Kinum, Center Coordinator, accepted the donation. The decision to donate the four canvas prints came several months ago, at a meeting where members agreed to offer Garden Club member, Joanne Petcuovas's photo artwork, as a gift. The offering was made as thank you gesture for permittance of the club's center usage.

Center Director, Stacey Kinum and Joanne met and four pieces of photo art were selected to be printed on canvas, which will be displayed on walls of the center.

The club mission is to promote an interest in gardening, landscape design, flower arranging, and encourage the study of horticulture. Club goals are to assist garden club members and members of the community to develop an interest in civic beauty within the community.

Meetings are held on the second Monday of each month, unless otherwise stated, at the DeCorso Community Center from September through June. Meetings begin at 7:00 p.m. with guest speaker or demonstration. Refreshments are served immediately after the presentation.

Website: npgardenclub.weebly.com
Facebook: New Providence Garden Club
Contact: npgardenclub@gmail.com



PAINTING & MASONRY

- Exterior / Interior Painting
- Finish Carpentry
- Masonry / Stone / Concrete
- Patios / Walkways

908 343 4897

www.AffordableHomeImprovementNow.com

Top Soil & Mulch

908-464-0208



Jeff Fitzgerald, PT, DPT

NJ License #40QA00847100

Serving The Local Community Since 2006

**Most Major Insurance
Companies Accepted.**

391 Springfield Avenue, Suite 2A
Berkeley Heights NJ 07922

908-898-1950

Fax: 908-898-1960

www.berkeleyheightspt.com

FOR SENIORS: The Residences at Warren



**Not ready for assisted living?
Come enjoy the CHC way of life!**

BEAUTIFUL. AFFORDABLE. AVAILABLE NOW!

You've lived alone, you've lived with family, now live with friends!

- Independent and Supportive Living for seniors age 62+
- Income: up to \$58,800
- Private, spacious room with full bath
- Shared great room, dining room, den, porch and hobby room
- Food preparation and housekeeping included!
- Additional support services available



To learn more call 908-526-8130
or visit www.CHChousing.org

**Why Repave?
Sealcoat & Save!**
MAKE YOUR ASPHALT GREAT AGAIN!

BACK TO BLACK SEALCOATING

732-968-3646

backtoblacksealcoating.com

backtoblacksealcoating@yahoo.com

WE WILL EDGE, CLEAN, PRIME OIL SPOTS & SEALCOAT YOUR DRIVEWAY!

- Parking Lot Line Striping
- Driveways & Parking Lots
- Specializing in Large Parking Lots
- Hot Rubberized Crack Filling
- Hot Asphalt Repairs
- Asphalt or Coal Tar (Emulsion Sealer)
- Pothole Patching
- SNOW REMOVAL
- Power Washing
- Asphalt Patch Work

**Call for a
FREE Estimate
& Receive a
FREE Gift!**

**5% DISCOUNT
FOR SENIORS
& VETERANS!**

*We will beat any legitimate
Sealcoat company's written estimate.*
FULLY INSURED!
Lic# 13VH06534400

**\$50 OFF DRIVEWAY REPAIR
or SEALCOATING**

Minimum purchase \$500. Limit one. No other discounts apply. Exp. 6/30/16.

GUTTER CLEANING



1-877-535-8660

WWW.KELTOMGUTTERS.COM

**\$15 OFF
GUTTER CLEANING**

First Time Customers Only.
Cannot be combined with any other offer.



Formerly Affordable Tree Care

Tree Service - Masonry

**We Will Beat Any Written Quote
From A Reputable, Insured Tree Service.**

908-414-4509

**Call Today For
A FREE Estimate**



**10% OFF
ANY SERVICE**

\$300 maximum discount
Coupon must be presented at time of
estimate. Cannot be applied to previous
estimates or scheduled work.
Cannot be combined with any other offer.
Expires 7/10/16

**FREE
STUMP GRINDING**
With Any Tree We Remove.
Includes Removal of Up to
1 Yard of Grindings

\$300 maximum discount
Coupon must be presented at time of
estimate. Cannot be applied to previous
estimates or scheduled work.
Cannot be combined with any other offer.
Expires 7/10/16

FULLY INSURED • 24 HR EMERGENCY SERVICE AVAILABLE

WHAT WILL YOU LOOK LIKE IN 40 DAYS?



COMPARE

Today's **Most Popular** 3 vs. **NUTRIMOST**
Weight Loss Programs

- | | | |
|---|---------------------------------|---|
| ✗ | State of the Art NRF Technology | ✓ |
| ✗ | Fat Burning | ✓ |
| ✗ | Targets Abdominal Fat | ✓ |
| ✗ | Resets Metabolism | ✓ |
| ✗ | Resets Weight Set Point | ✓ |
| ✗ | No Hunger | ✓ |
| ✗ | Doctor Supervised | ✓ |

LOSE 20-45lbs IN JUST 40 DAYS
GUARANTEED!

SIGNUP
REGISTER FOR A
CONSULTATION



TECHNOLOGY HAS GIVEN US THE ABILITY TO FIND OUT WHY YOU ARE STORING FAT AND HOW TO GET RID OF IT!

A "one-size-fits-all" weight loss program will only take you so far (and after many months of hunger and a boatload of cash).

Targeting your specific hormone makeup is the key to fast and effective weight loss. Our NRF Technology essentially takes your hormonal fingerprint to determine the exact ingredients you need to bring your body into an optimal state of fat burning. And beyond the initial weight loss, restoring balance with the system actually resets your metabolism and weight set point so that you **keep the weight off** after you lose it.

➔ **\$72⁰⁰** ➔
a \$99 value

BODY COMPOSITION ANALYSIS

A complete assessment and teaching of your current body composition in comparison to where you should be. This analysis includes your body fat percentage and mass, visceral fat rating, body water percentage, metabolic age and other important metrics.

& FAT LOSS CONSULTATION

A personally integrated session with a NRF Technology Specialist to discuss how this revolutionary technology can help you naturally detox and heal your body, restore balance to your hormones and neurotransmitters, and reset your metabolism.

CALL 908.279.7740 OR VISIT CENTRALJERSEYHEALTH.COM

